



2016 National Convention & International Forum

OCTOBER 27-29
ORLANDO, FLORIDA



SHAPING THE FUTURE


The Arc®

Inclusion
international 

A photograph of the San Diego skyline and a marina. In the foreground, several white sailboats are docked in the water. Behind them, a variety of skyscrapers are visible against a clear blue sky. The Sheraton San Diego Hotel & Marina is a prominent feature in the center. The water is a deep blue, and the sky is a vibrant blue.

The Arc's 2017 National Convention

Sheraton San Diego Hotel & Marina
San Diego, CA

November 1-4, 2017

THANK YOU TO OUR 2016 SPONSORS!

WELCOME	5
FLOOR PLANS	6
EVENT INFORMATION	7
SPONSORS	9
SPECIAL THANKS	14
SCHEDULE	19
ENTREPRENEUR ALLEY	37



Editor's Note on Terminology: Throughout our program you will see the terms "intellectual disabilities", "intellectual and developmental disabilities" and "intellectual disability" used. "Intellectual disabilities" is a term used by Inclusion International; "intellectual and developmental disabilities" and "intellectual disability" are terms used in the United States. We have used the correct term in context to respect the source. As these terms may be somewhat unfamiliar depending on where convention participants are joining us from, we hope this clarification avoids any confusion about session content.

DiversityComm, Inc. Would Like to Congratulate The Arc on *Shaping The Future*. National Convention & International Forum Attendees, Download your FREE issues today!



To Read your FREE Issues—
Download the app: DiversityComm
Login: TheArc
Password: 2016



WELCOME

Dear Attendees,

We welcome you to The Arc and Inclusion International's 2016 National Convention & International Forum! We are thrilled to once again be bringing together our organizations and advocates from across the globe to "Shape the Future" of disability rights worldwide. While distance may divide us, shared experiences unite us.

This event is a unique opportunity for thought leaders, self-advocates, families, and experts from the international disability community who have a vested interest in supporting inclusion to come together. Our program this year is filled with inspirational and educational speakers covering a broad array of topics, ranging from supported decision-making and inclusive education to access to justice and employment.

One of the most exciting parts of this event is sure to be the Global Self-Advocacy Leadership Summit, which will host self-advocate leaders from around the world in a full day leadership summit. The outcomes of the Summit will be shared with attendees in a powerful general session dedicated to the future of self-advocacy and how we will continue to collaborate to further our shared mission of inclusion.

Of course, we are also thrilled to be playing host to the full cast of A&E's Emmy Award-Winning Series, *Born This Way* and Owen and Walt Suskind,

stars of the hit documentary film *Life, Animated*. These celebrities are helping to turn a spotlight to individuals with disabilities and highlighting all that they can and are achieving!

A huge thank you to our sponsors that helped make this incredible event possible. Last, but certainly not least, thank you to all of you for your continued commitment to inclusion. Your participation and passion is what makes this event so memorable. While we have an amazing program for you all, our hope is that the most valuable thing you leave with is new connections to colleagues and friends. Together we will make the future more inclusive!



Ronald E. Brown

RONALD E. BROWN

President, The Arc's Board of Directors



Klaus Lachwitz

KLAUS LACHWITZ

President, Inclusion International

FLOOR PLANS

Hilton Orlando Lake Buena Vista



EVENT INFORMATION

Quiet Room

Sabal

For individuals with auditory, visual, or sensory issues or those just needing a quiet place to get away. This room is available for use during event hours.

Presenter Prep Room

Veranda

The Presenter Prep Room will be available on a first come, first served basis for any presenters who want to practice their presentations, and will be equipped with an LCD projector, screen, and laptop. We ask that all presenters are courteous of their peers so we can accommodate everyone.

Social Media

Share your experiences and photos using the hashtag #ShapetheFuture. You can find us on:

 /TheArcUS
/inclusioninternational

 @TheArcUS | @InclusionIntl

Mobile App

Find the convention mobile app by searching for "2016 National Convention and International Forum" in the Apple App Store or "Convention/International Forum" in the Google Play Store. Use it to see the event schedule, presenters, and session locations.

You can even connect with other attendees! If you need help downloading or using the app, ask any national staff member for help.

Photos and Videos

We will be taking photographs and shooting videos which may be used in various media/social media channels owned by The Arc and/or Inclusion International. Future products may include print publications, videos, websites, promotional materials, and social media. Please inform us at the registration desk if you do not wish to be photographed or filmed and accommodations will be made.

Color Communications Badges

Color Communications Badges help people express their communication preferences. Use them to easily express your current communication preference, and simply switch the card if your preference changes. Attendees should familiarize themselves with their meaning so they can be respectful of their fellow attendees.

Green: the person is actively seeking communication.

Yellow: the person only wants to talk to people they recognize, not strangers. They might approach strangers to talk; and they are welcome to engage. But unless

you have already met them in person, you should not approach them.

Red: this person doesn't want to talk to anyone, or only a few people. They might approach others to talk; those people are welcome to engage. Otherwise, you should not approach them.

The Arc Under One Umbrella

The Arc's national office has a variety of resources and programs related to education, future planning, employment, health, advocacy, and more. All of these initiatives exist as a resource for YOU! Stop by our program tables to learn about the work we do, and connect with our national program staff!

Wednesday, October 26

12:00 PM – 6:00 PM

Thursday, October 27

7:00 AM – 11:30 AM

Entrepreneur Alley

Salon 4 & 5

Thursday, October 27

12:00 PM – 6:30 PM

Friday, October 28

8:00 AM – 1:00 PM

Sponsor Exhibit Hours

Grand Ballroom Foyer

Friday, October 28

8:00 AM – 4:00 PM

EVENT INFORMATION

The Arc Store

Grand Ballroom Foyer

Where you can get The Arc's exclusive merchandise. Don't forget to bring something back for friends and colleagues!

Thursday, October 27

12:00 PM – 6:30 PM

Friday, October 28

8:00 AM – 3:30 PM

Saturday, October 29

8:00 AM – 10:30 AM

NCE Silent Auction

Grand Ballroom Foyer

The National Conference of Executives of The Arc (NCE) Silent Auction is a fundraiser to support a scholarship fund providing training opportunities for leaders of The Arc.

Friday, October 28

8:00 AM – 4:00 PM

Saturday, October 29

8:00 AM – 10:30 AM



**Keep your
benefits and
save for
the future.**


**Introducing the
Enable Savings Plan.**

The Enable Savings Plan provides tax-free savings accounts for eligible individuals with disabilities. You can save for current and future expenses without impacting your resource-based benefits.

To find out more about the Enable Savings Plan and to enroll, visit us at EnableSavings.com.

Investments Are Not FDIC Insured* | No Bank, State or Federal Guarantee | May Lose Value
*Except the Bank Savings Option ©2016 First National Bank of Omaha

ENableSM
SAVINGS PLAN

Find us on 

SPONSORS

Thank you to our sponsors for supporting this year's National Convention & International Forum! Visit them in the Grand Ballroom Foyer.

Sponsor Exhibit Hours

Friday, October 28 from 8:00 AM – 4:00 PM

**New Sponsor*



oregon529network.com/about/oregon-able-savings-plan

ABLE for ALL is not your average ABLE savings plan! ABLE for ALL will provide national tax-advantaged savings accounts for individuals and their families to save for disability expenses without losing vital benefits. ABLE for ALL will also provide comprehensive support, resources, and management tools to help foster true financial empowerment. www.ableforall.com



ABLEnow, the Virginia-sponsored ABLE savings program, will open for nationwide enrollment in late 2016. Virginia will be among the first states in the country to launch a tax-advantaged ABLE savings program for eligible individuals living with disabilities. Visit www.able-now.com to learn more and subscribe to updates.



anthem.com/health-insurance/home/overview

Through our family of health plans, Anthem has 25 years of experience providing care, service, and support coordination for state-sponsored health programs that span 20 states.

Anthem is committed to fulfilling the promise of self-determination, supporting members' right to live their lives, their way.



CARF is an international, independent, nonprofit accreditor of human service providers and networks. More than a million people of all ages worldwide are served annually in CARF-accredited programs. Accreditation demonstrates a provider's commitment to enhancing the lives of persons served. Visit www.carf.org or call 888.281.6531 for more information.



Comcast NBCUniversal is a proud National Corporate Partner of The Arc. Comcast NBCUniversal and The Arc work together to expand technology resources and digital literacy training for people with intellectual and developmental disabilities to ensure everyone has the tools to reach his or her greatest potential.



directcourseonline.com

DirectCourse is an online training curriculum designed to empower support and care professionals who help people with disabilities and older adults lead meaningful lives within their communities. DirectCourse is a collaboration between Elsevier and the University of Minnesota's Research and Training Center on Community Living.

SPONSORS



Enable
Savings Plan

enablesavings.com

The Enable Savings Plan provides tax-advantaged ABLE accounts for eligible individuals with disabilities to save for current and future expenses without impacting resource-based benefits. Offered nationwide, the Enable Savings Plan has low fees and five investment options. EnableSavings.com contains robust tools and resources, enrollment online, and secure account access.



SpecialCareSM

massmutual.com/specialcare

MassMutual's SpecialCareSM is dedicated to helping families plan for their dependents with special needs, which includes preserving government benefits and providing financial solutions to assist with lifetime quality care.



A connected agency means better care.TM

medisked.com

More than just a software company, MediSked is an advocate for provider agencies through our technology and advisement solutions. Our products and services span the complete spectrum of DD Service provision—from oversight and insurance organizations to provider agencies, including chapters of The Arc, across the U.S.



mercer.com

Mercer Consumer, a service of Mercer Health & Benefits Administration LLC., is committed to furnishing members of The Arc with complete and affordable risk- and loss-

management products designed to fulfill your unique needs. To learn how easy it is to confidently look forward to the future, call us at 800.503.9230 or visit personal-plans.com/arc.

MUTUAL OF AMERICA Your Retirement Company[®]

mutualofamerica.com

Mutual of America specializes in providing retirement products and services to organizations and their employees, as well as to individuals. Since 1945, Mutual of America has remained committed to its mission to offer plan sponsors, plan participants, and individuals carefully selected, quality products and services at a competitive price and the personal attention they need to help build and preserve assets for a financially secure future.



nationaldatacare.com

National DataCare offers RFMS, a complete and dedicated client fund system. RFMS is an integrated banking solution that includes direct deposit of SSI checks, automates payments to agency or outside rent, improves cash flow, automatically reconciles, and controls against fraud and abuse of client funds. RFMS is used by customers in 49 states.



optum.com

OPTUM is a leading health services and innovation company dedicated to helping make the health system work better for everyone. With more than 100,000 people collaborating worldwide, OPTUM combines technology, data, and expertise to improve the delivery, quality, and efficiency of health care.

SPONSORS



pexcard.com

PEX, a New York FinTech company founded in 2006, is a platform provider of next generation corporate card and expense management solutions for businesses. Businesses maintain control of their money by using the PEX Visa® Prepaid Card by issuing cards to employees, supplying funds, and limiting where staff can spend.



A Member of the Tokio Marine Group

phly.com

Philadelphia Insurance Companies (PHLY) designs, markets, and underwrites commercial property/casualty and professional liability insurance products, incorporating value-added coverages and services for select industries.



reliaslearning.com

Relias Learning's staff development systems better equip organizations supporting people with developmental disabilities with the competency, development, and monitoring to provide person-centered and inclusive services at a more efficient level. Visit reliaslearning.com to find out why Relias Learning has become the leading online healthcare training system in the world.



Special needs require special attorneys

specialneedsalliance.org

The Special Needs Alliance (SNA) is a national non-profit comprised of attorneys with extensive experience in public benefits and disability law. SNA partners with The Arc to

provide educational resources and advocate for policies on behalf of people with intellectual and developmental disabilities and their families.



therapservices.net

Therap Services is the industry's leading Web-Based, HIPAA Compliant, Nationally Certified Electronic Medical Record, Documentation, Communication and Billing system for organizations supporting individuals with intellectual and developmental disabilities. Therap supports around 2,000 organizations across the U.S. Therap's user friendly solution increases the quality of care, compliance, staff communications, efficiency, and more.



get.tracfone.com

TracFone Wireless, Inc., is America's largest "No-Contract" cellular provider. TracFone's SafeLink Wireless® is a LifeLine-supported service for income-eligible households, providing a FREE cellphone and airtime monthly to qualifying applicants (via State/Federal programs). TracFone believes that cell phone ownership is a right and an important tool for individual success.



grocery.walmart.com

Our Pickup Service offers an efficient and convenient means for customers to order their groceries and save time by allowing our dedicated team of trained expert associates to shop for them. We offer this service for FREE with the same in-store prices on a broad assortment and best-in-class customer service, guaranteed.

HERE'S TO PUTTING PEOPLE FIRST.

Comcast NBCUniversal is proud to partner with The Arc
and support this year's National Convention & International Forum.

Thank you for your commitment to advancing inclusion for people of all abilities.

[COMCASTCORPORATION.COM](https://comcastcorporation.com)





Proud Annual Sponsor of The Arc and
Inclusion International's 2016 Convention

Electronic Documentation for I/DD Service Providers

Therap is the industry leader in providing electronic records and documentation in long-term care services for people with Intellectual and Developmental Disabilities. Therap's web-based application suite was designed to provide a comprehensive solution for the planning, documentation, reporting, communication and billing needs of organizations working in home and community-based services (HCBS) and other settings.

Individual Support

- Goal Tracking
- Support Plans
- Personal Finance
- Daily Notes
- Incident Reports
- Employment History
- Document Storage
- Demographic Information
- Secure Communication

Billing Support

- Electronic Billing
- Unit Calculations
- Electronic Claim Submission
- Denied Claim Report
- Billing Data Summary
- Utilization Reports
- Reconciliation Reports

Electronic Health Records

- MAR with Drug Database
- Nursing Care Plans
- Health Care Reports
- Comprehensive Health Assessments
- Appointments, Vital Signs, Intake/Elimination, Lab Tests & more

HIPAA Compliant

- ✓ Secure
- ✓ Improved Quality of Care
- ✓ Real Time Notifications
- ✓ Measure Health Outcomes



SPECIAL THANKS

Thank you to Deborah Linton, The Arc of Florida, and chapters across the state for their support in making this a successful event.

THE ARC WOULD LIKE TO THANK ALL OF THE GENEROUS 2015 AND 2016 MAJOR DONORS:

Quincy and Zelia Abbot
Tony** and Teresa Anderson
M.J. Bartelmay**
Jeffrey and Susan Bassett
Robert Beggin
Carla Behnfeldt
Robert and Vaneeda Bennett
Bergen Foundation
Peter Berns and Melissa Zieve
Board of Trustees of IOOF
Charles Binder and Nancy Shor
David and Laura Braddock
Dean Brenner and Robin Shaffert
Ronald** and Judy Brown
Paul and Roberta Bonanto
Alfred and Patricia Cambridge
Ross and Heather Charkatz
Douglas** and Glenys Church
Wilfred Cooper
Wesley Dibbern*
Greg and Karen Dimit
William and BrendaDoss
David and Cynthia Edelson
Hugh M. Evans, III**
Doug Flutie Jr. Foundation
Jeffrey Schwamm and Marty Ford

Grace Francis**
Sheryl Frishman**
Alex Glashausser
Glickfield Family Foundation
Gregory Galluzzo and Mary**
Gonzales
Dan and Sarah Heins
Michael and Candace Herbst
Timothy** and Pat Hornbecker
Sari Hornstein
Nelson Humphrey*
Howard and Trudy Jacobson
Thomas** and Susan Judd
Mark and Chris Kevitt
Ron and Charry Levitz
John T. Lewis
Don Martines
Tom and Elise** McMillan
Andrew and Shanna Milman
Frederick Misilo**
Stephen and Dianna Morgan
Bill and Sheila Natbony
Randall** and Denise Patrick
Frank and Kelly** Piacenti
Irma C. Poretsky
Qualcomm Charitable Foundation
Philip** and Gina Richards
James and Patricia Rosner
Marijo Rymer

Robert Sapovits and Gita Estersohn
Skadden Arps Slate
Rick Stamberger
Kathleen Stauffer**
John and Julene Stellato
Brett Ubl
Harvey and Theresa Varnet
Wagner & Bonsignore
Robert and Nancy** Webster
Thomas Weir
Stephen and Sheryl Weisbuch
William M. Weiss Foundation
Emile and Dorothy Werk
Tom and Carol** Wheeler
Michael and Karen Wolf-Branigin

*Bequest gifts

**Current members of the
national board

***Gifts in the amount of \$1,000
and above are listed. Donors are in
alphabetical order. Contributions
referenced were received by The Arc
between January 1, 2015 and August
15, 2016. We apologize if any
names of donors were inadvertently
left off. Please send us an email
(donorsupport@thearc.org) if you
feel there is an error or if you would
like to learn more about how you
can support The Arc. Thank you.

SPECIAL THANKS

THANKS TO OUR 2016 BOARD OF DIRECTORS:

OFFICERS

Ronald Brown, President
Dallas, TX
Elise McMillan, Vice President
Nashville, TN
M.J. Bartelmay, Jr., Secretary
Hermitage, PA
Thomas A. Judd, Treasurer
Minnetonka, MN

DIRECTORS

Tony Anderson (NCE Rep.)
Sacramento, CA
Gary Bass, Washington, DC
Doug Church, Oak Hill, VA
Barbara Coppens, Cherry Hill, NJ
Hugh M. Evans, III,
Baltimore, MD
Grace L. Francis, St. Louis, MO
Sheryl Frishman, Irvington, NY
Dena Gassner, Huntington, WV
Mary Gonzales, Chicago, IL
Tim Hornbecker (NCE Rep.)
San Leandro, CA
Frederick Misilo, Jr.,
Northborough, MA
Randy Patrick, Aurora, CO
Kelly Piacenti, Chester, NJ
Philip Richards, Birmingham, AL
Kurt Rutzen, Minneapolis, MN

Kathleen Stauffer, Mystic, CT
Margaret Lee Thompson,
Redmond, WA
Carol Wheeler, Washington, DC

PRO BONO COUNSEL

Stacy Taylor, San Diego, CA

INCLUSION INTERNATIONAL COUNCIL OFFICERS

Klaus Lachwitz, President
Fadia Farah, Vice President
Ralph Jones, Secretary General
Tim Gadd, Treasurer
Vanessa Dos Santos

COUNCIL

Fauzia Haji, Regional representative
for Africa, Zanzibar
Raquel Jelinek, Regional representative
for the Americas, Mexico
Nagase Osamu, Regional
representative for Asia-Pacific, Japan
Maureen Piggot, Regional
representative for Europe,
United Kingdom
Sheika Jameela Al-Qasimi, Regional
Representative, Middle East and
North Africa, UAE
Mia Farah, Self-advocate
representative for Middle East and
North Africa, Lebanon

David Corner, Self-advocate
representative for Asia Pacific,
New Zealand

Quincy Mwiya, Self-advocate
representative for Africa, Zambia
Sara Pickard, Self-advocate
representative for Europe,
United Kingdom

Luis Gabriel Villareal, Self-advocate
representative for the Americas,
Colombia

INCLUSION INTERNATIONAL WOULD LIKE TO THANK THE FOLLOWING:

ORGANIZATIONS



INDIVIDUALS

Keith Harris

HELP PROTECT YOUR Family & Future

Affordable Insurance Options Available to Members of The Arc and Their Families

Insurance options are available for all members of The Arc through a partnership with Mercer Consumer, a service of Mercer Health & Benefits Administration LLC* ("Mercer Consumer"), one of the largest risk management organizations in the world. Mercer Consumer has researched and analyzed benefit options to ensure the plans below are offered at competitive prices for members of The Arc and their families.

MEMBER INSURANCE OPTIONS:

- • **Auto**
- • **Home/Renters**
- • **Group Term Life**
- • **Hospital Income Plan**
- • **Major Medical**
- • **Medicare Supplement**

Go to:

www.personal-plans.com/thearc

Or call:

800-503-9230

to find out more including costs, exclusions, limitations and terms of coverage, and to get a FREE, NO-OBLIGATION quote.

Great news for members of The Arc

Your membership in The Arc provides you an opportunity to obtain wide-ranging insurance protection for yourself and your family with quality Group Insurance Options ... at significant savings.

WE'LL HELP YOU ...

- Protect Your Finances
- Find Affordable Options
- Quickly Start Your Coverage



In CA d/b/a Mercer Health & Benefits
Insurance Services LLC
AR Insurance License #100102691
CA Insurance License #0G39709

* Mercer Consumer is a registered trade name of Mercer Health & Benefits Administration LLC.

Coverage may vary and/or may not be available in all states. Coverage is dependent on underwriting approval.

75388 (9/16) Copyright 2016 Mercer LLC. All rights reserved.

INSURANCE PROTECTION • COMPETITIVE RATES • EASY SIGN-UP



**Our dream is for
a better reality**

*Proud sponsor of The Arc
2016 National Convention and
International Forum*

Anthem[®]

A retirement product is not a retirement plan.

What's your game plan? To get help with yours, visit *mutualofamerica.com* or call 1-866-954-4321.

MUTUAL OF AMERICA
Your Retirement Company®

Mutual of America® and Mutual of America Your Retirement Company® are registered service marks of Mutual of America Life Insurance Company, a registered Broker/Dealer, 320 Park Avenue, New York, NY 10022-6839.

PROGRAM

WEDNESDAY, OCTOBER 26

Registration

8:00 AM – 8:00 PM

Salon 4 & 5

Inclusion International Pre-General Assembly Prep Meeting

8:45 AM – 9:45 AM

Palm Ballroom 5

INTERNATIONAL

NCE Steering Committee Meeting

9:00 AM – 12:00 PM

Salon 1 & 2

Inclusion International General Assembly Meeting

10:00 AM – 5:00 PM

INTERNATIONAL – TRANSLATED IN SPANISH

Palm Ballroom 3 & 4

The General Assembly is open to all, but only accredited members of Inclusion International will be able to vote.

NCE Professional Development Seminar

1:00 PM – 5:00 PM

International Ballroom South

During Part 1 of the NCE Professional Development Seminar, the Disney Institute will bring attendees “Disney’s Approach to Leadership Excellence”.

Pre-registration is required for this event (\$)

The Arc Board of Directors’ Meeting

4:00 PM – 8:00 PM

Salon 1 & 2

Reception for Chapter Leaders

5:00 PM – 6:00 PM

Palm Ballroom Foyer

*Sponsored by



 **SpecialCare**

NCE invites all The Arc’s chapter leaders and staff to gather with colleagues old and new. Take the opportunity to meet others that share in the passion of The Arc. Light refreshments will be served.

Pre-registration is required for this event

THURSDAY, OCTOBER 27

Registration

7:00 AM – 7:00 PM

Salon 4 & 5

NCE Professional Development Seminar

7:30 AM – 11:00 AM

International Ballroom South

During Part 2 of the NCE Professional Development Seminar, attendees will come together to strategize on effectively using the Disney methods in their own organizations and incorporate case studies to find solutions to common leadership challenges.

Pre-registration is required for this event (\$)

Global Self-Advocacy Leadership Summit

9:30 AM – 3:00 PM

INTERNATIONAL – TRANSLATED IN SPANISH

Palm Ballroom 3 & 4

*Sponsored by



Self-advocates from around the world are coming together to be part of something BIG! Serving as the launch of

CONTINUED ON NEXT PAGE ►

THURSDAY, OCTOBER 27

Inclusion International's *Empower Us: A Global Resource to Support Self-Advocacy*, the Summit will bring participants together to explore how to build self-advocacy on a global level and identify ways to connect and build on efforts happening around the world. Best practices on how to build a successful self-advocacy support network will be shared and strategies for getting your voice heard will be explored. Attendees will also identify ways to connect and build on our collective efforts to create a strong movement on a local, national, and international levels and work to develop a personal action statement for moving their efforts forward. The Summit will be an action-oriented day, facilitated by local and international self-advocates. This session is led by self-advocates for self-advocates but welcomes all.

Facilitation team: Adonis Brown (US), Dena Gassner (US), Mike Nagel (US), Barbara Coppens (US), Anthony Nash (US), Jill Egle (US), Quincy Mwiya (Zambia), Mark Mapemba (Malawi), Luis Gabriel Villarreal (Colombia), David Corner (New Zealand), Sara Pickard (United Kingdom), and Mia Farah (Lebanon)

11:15 AM – 12:15 PM BREAKOUT SESSIONS

Employment First: Shaping the Future of Workshops and Community Employment

Salon 3

Bitta DeWees, Karen Freeman

With upcoming changes to the federal and state definitions of home and community-based services, we anticipate seeing significant changes for people with disabilities over the next several years. At Stone Belt Arc we have always placed a strong emphasis on consumer choice,

employment of all types for adults, and community inclusion. In the past few years, we have started several strategic initiatives to continue to offer more choice in the community, and to start to shift services based on the new federal definitions. We will present on these initiatives to teach participants about upcoming changes and potential new services that can be offered. The information will be of benefit to people with disabilities, their families, and providers.

Inciting and Igniting Change: Designing and Demonstrating Promising Practices

Salon 8

Caitlin Bailey, Julie Bershadsky, Marian Frattarola Saulino

This interactive presentation will introduce The Integrated Quality Management Approach (IQMA), a new and inclusive approach to eliciting, organizing, measuring, analyzing, and aligning individual outcomes with organizational practices and state and national regulations and standards. IQMA is a person-centered organizational development process that puts us, the IQMA team, in partnership with agency stakeholders. We share our expertise to build the internal organizational capacity and infrastructure needed to design, provide, and measure services that are truly driven by people who use supports.

Leave No One Behind—Can the Promise of Inclusive Development Deliver?

INTERNATIONAL

Salon 6

Connie Laurin-Bowie, Klaus Lachwitz, Raquel Jelinek, Fauzia Haji

The 2030 Agenda is an ambitious global agenda that will set the course for international efforts for at least the next 15 years. It will have significant influence on how governments and the UN fund address key issues like: education, poverty, health care, climate change, etc. Its overarching principle is: Leave No One

THURSDAY, OCTOBER 27

Behind. How can we ensure that people with intellectual disabilities and their families are truly included and not left behind? This session will share information about the 2030 Agenda and ways that people with intellectual disabilities and their families can be involved.

Promising Practices and Challenges in Family Support

Salon 1

Stella Beard, Carrie Hobbs Guiden, Tony Anderson, Robin Shaffert, Jennifer Sladen

Families play a central role in providing emotional and physical support to people with disabilities. In 2015, the AARP Public Policy Institute estimated that families provide \$470 billion worth of caregiving annually for family members who have disabilities or who are aging. Approximately 75% of Americans with intellectual and developmental disabilities live in the community without any formal disability services. Many people with intellectual and developmental disabilities live with their families and rely on them for varying levels of support. This session will highlight federal and state policy developments, promising practices, and research to provide better support to these families, as well as strategies that attendees can use to access available supports and improve support provided to families in their communities.

Update from Washington: Featuring The Arc's Public Policy Staff

Salon 7

Marty Ford, Julie Ward, Annie Acosta, T.J. Sutcliffe, Nicole Jorwic

The Arc's public policy team will provide an overview of the current happenings in federal disability policy. As the 114th Congress nears the end of its second term, there are many important things taking place in the Nation's capital that

affect people with disabilities. Come hear about the Budget situation, Medicaid, Social Security, Education, Employment, HCBS, and more.

Winning Relationships to Partnerships—Working “With” the Corporate Sector

Salon 2

Fred Maahs, Russell Shaffer, Trudy Jacobson

The past few years The Arc has been able to develop strong national partnerships with some of our nation's top companies. This panel will offer an opportunity to understand why these companies are interested in The Arc and the people we serve. What makes for a successful partnership in the eyes of these companies? What are their goals? What can they gain from partnering with us? This session will outline what our chapters can do to become a part of these partnerships so they can move the mission of The Arc forward in local communities, as well as nationally.

Lunch on Your Own

12:15 PM – 2:00 PM

NCE Awards Luncheon

12:30 PM – 2:00 PM

International Ballroom South

*Sponsored by **MUTUAL OF AMERICA**
Your Retirement Company

The NCE Awards Luncheon recognizes leaders who are striving for excellence and advocating for inclusion, all while fulfilling The Arc's mission.

This year's honorees are:

- ▶ ***Rising Star Award:*** Kimberly McCarten, President & Chief Executive Officer, The Arc of Palm Beach County, FL

CONTINUED ON NEXT PAGE ▶

THURSDAY, OCTOBER 27

- ▶ **Program Innovation Award:** Nancy Murray, President, The Arc of Greater Pittsburgh at ACHIEVA, PA
- ▶ **Diversity & Cultural Competence Award:** Peggy Terhune, President & Chief Executive Officer, The Arc of Stanly/Monarch, NC
- ▶ **Outstanding Professional Achievement Award:** Marty Rothwell, Program Director, The Arc of Sedgwick County, KS
- ▶ **Lifetime Achievement Award:** Adrian Esposito, Filmmaker, Espocinema, NY
- ▶ **Executive Excellence Award:** Jon Meyers, Executive Director, The Arc of Arizona, AZ
- ▶ **Exemplary Career Achievement:** Stephen H. Morgan, Executive Director, The Arc Baltimore, MD

This is a ticketed event (\$)

2:00 PM – 3:00 PM BREAKOUT SESSIONS

Family and Informal Supports: What are They and Why Do They Matter?

INTERNATIONAL

Salon 1

Jessica Dai Rong, Pramila Balasundaram, Martha Robles, Fadia Farah

Around the world, the primary source of support for people with intellectual disabilities is their families. Families consistently report that they receive little or no assistance

to do this. How do we support them? Further, in many countries, few or no public resources are used to support people with intellectual disabilities or their families. Informal supports, sometimes called natural supports, are identified as an alternative to formalized service and support systems. This session will explore what it means to build “supports for families” and “informal supports”. Are they a sustainable alternative that can better support inclusion or an attempt to minimize government’s role?

HCBS Settings Rule: Lessons Learned from State Activities and Implementation

Salon 6

Nicole Jorwic, Carrie Hobbs Guiden, Michelle Morse Jernigan

This session will include updates on the drafting of state transition plans for the HCBS rule as well as how the implementation of the rule is taking shape on the ground. There will be discussion of the real world impact of these rule changes and how individuals, providers and families are working toward the necessary changes. Learn about the strategies and plans that states are using to come into compliance with the HCBS rule for residential and non-residential settings.

Making The Arc’s Philanthropic Case

Salon 8

Kathy Swayze

It’s not easy to convince people to give away their hard-earned money to total strangers. But with a strong case for support for your organization, you can inspire more and bigger donations. In this session, you’ll hear from master fundraising storyteller Kathy Swayze, CFRE about the case for support her team developed for The Arc. You’ll leave inspired to spruce up your own fundraising communications to help you raise more money.

THURSDAY, OCTOBER 27

Policy and Position Statements Update*Salon 7**Elise McMillan, Fred Misilo, Ronald Brown, Peter Berns, Marty Ford*

This session will review the three position statements that were redrafted for consideration for chapters at the business session of Convention: Opportunities for Financial Asset Building, Addressing the Causes and Effects of Intellectual and Developmental Disabilities, and Autonomy, Decision-Making Supports and Guardianship. This is an important opportunity to ask questions about proposed revisions to the three position statements.

The Healing Center: A Trauma Focused Group Processing Program*Salon 3**Jennifer Hermann, Heather Rivera*

Trauma, grief, and loss...these aspects of a person's wellbeing may leave him/her feeling frozen with an inability to move forward in the pursuit of a fulfilled, happy, and productive life. With the marriage of Positive Identity Development and Trauma Informed Care, Healing Center facilitators use therapeutic interventions to help individuals' process feelings and express emotions in a warm, safe environment. By incorporating various expressive modalities in a group setting, this program provides a solid foundation for exploration and growth. Through implementing a three part programmatic design while

utilizing the necessary function of natural peer support, participants can carry out skills for use in their home life and work settings to help build stronger connections, resulting in positive relationships.

Working in Partnership to Challenge Stigma Associated with Intellectual Disability in a Global Context**INTERNATIONAL***Salon 2**Katrina Scior, Oonagh Smyth, Olayinka Akindayomi, Sara Pickard*

Promoting positive attitudes towards people with intellectual disabilities and challenging stigma are vital to ensuring equal rights, empowerment, self-determination, and inclusion for people with intellectual disabilities. In order for efforts to challenge stigma to have real benefits for their lives, we need to work in partnership across stakeholder groups, national and cultural boundaries, high and middle and low income countries, and ensure that research and evaluation are integrated into efforts from the outset. In this session, a self-advocate, researcher, campaigner, service provider, and parent advocate from different world regions come together to illustrate what joining forces to challenge intellectual disability stigma may look like and to engage the audience in discussing how we should move forward.



A&E's Born This Way:

How our Families Are More Similar Than
Different Across the Globe

3:30 PM – 5:30 PM

INTERNATIONAL – TRANSLATED IN SPANISH

Palm Ballroom



Gail Williamson

A&E's Emmy Award-Winning docu-series "Born This Way" follows a group of seven young adults born with Down syndrome along with their family and friends in Southern California. Cameras follow the young men and women of "Born This Way," as they pursue their passions and lifelong dreams and explore friendships, romantic relationships, and work, all while defying society's expectations.

We are excited to welcome the full cast of this first-of-its-kind television program for an exciting conversation about public perception of people with disabilities, community inclusion, employment, family, and much more. This session will also feature the United Nations Special Rapporteur Ms. Catalina Devandas-Aguilar on the rights of persons with disabilities, discussing how the experiences of families are the same across the globe. While circumstances may vary, the experiences we all have are more similar than different.

This session will be moderated by the cast's talent agent and friend Gail Williamson.

PROGRAM

THURSDAY, OCTOBER 27

Welcome Reception & Meet and Greet with the Cast of Born This Way**5:30 PM – 6:30 PM***Grand Ballroom Foyer*

*Sponsored by

Anthem

Following the opening general session, please join us for a fun reception that gives attendees the opportunity to catch up with old colleagues and friends and make new connections. Don't miss your opportunity to meet the cast of Born This Way, get an autograph, and even snap a picture!

Light refreshments will be served.

Poolside Paradise Party**7:30 PM – 10:30 PM***Poolside*

"We all need an occasional dose of paradise..."

The Arc of Florida's take on American Pop Icon, Jimmy Buffet's song "Cheeseburger in Paradise"! We know many of you have traveled quite a distance to join us in Florida, so take a load off and have some fun as we kick off this year's event.

Chill by the pool while enjoying great food, networking, laughs, and lot of fun. Wave goodbye to the real world and escape to paradise with us!

This is a ticketed event (\$)

Tickets available at the door for \$25

FRIDAY, OCTOBER 28

Continental Breakfast**8:00 AM – 9:00 AM***Grand Ballroom Foyer***Policy and Positions Committee Breakfast****8:00 AM – 9:00 AM***Poinsettia / Quince | 2nd Floor (Invitation Only)***State Executive Directors Breakfast****8:00 AM – 9:00 AM***Azalea / Begonia | 2nd Floor***9:00 AM – 10:15 AM BREAKOUT SESSIONS****Using Technology to Support the Lives of People with Intellectual and Developmental Disabilities: A Review of Different Approaches for Cognitive Supports***Salon 8**Richard Swierat, Kathleen Golisz, Jordan Jankus, Philip Proctor*

Teams from The Arc of Westchester and AHRC-NYC will provide an overview of their efforts to use technology to help support people with intellectual and developmental disabilities and provide stories of several individuals that illustrate the challenges and successes of their initiatives. The session will provide specific recommendations and tools for implementation in other organizations.

Engaging Individuals and Families in Conversations Around Employment*Salon 6**John Kramer, Amie Lulinski*

Family engagement is key to successful employment and life planning, with parents and siblings often leading their family members with disabilities on the path to employment through their own role modeling and encouragement. Despite

CONTINUED ON NEXT PAGE ►

FRIDAY, OCTOBER 28

what literature says about the true importance of family engagement, many parents lack the knowledge needed to meaningfully participate in employment planning. One critical gap is thinking about financial well-being for their family member with a disability. This session will provide an overview of themes and strategies identified through research on engaging individuals and families in employment planning, followed by a discussion on key gaps around employment engagement and solicit ideas and perspectives about the best ways to partner with families.

Leaders for Change: The Need for Family Leadership INTERNATIONAL – TRANSLATED IN SPANISH

Palm Ballroom 3 & 4

Bruce Uditsky, Anne Hughson

For over 60 years, our movement, founded by parents who came together to build a better life for their children, has advocated for inclusion. Now over 50 years later, there is still a need to support and sustain a strong family movement. One that is united, relevant to younger families, and able to meet the needs of families today. A movement that is effectively advancing self-advocacy and providing a common space for families—and self-advocates—to come together united for inclusion. This session will bring together family leaders from around the world to explore reinvigorating the leadership of families and building a united movement.

Supported Decision Making: Part 1 of 2 The Theory of Supported Decision-Making

INTERNATIONAL

Salon 1

Robin Shaffert, Michael Bach, Tina Campanella, David English, Ruth Luckasson

Around the world, recognition is increasing that all people—including people with intellectual and developmental

disabilities, people with mental health issues, and seniors—have the right to make their own decisions AND that everyone should receive the support they want to make those decisions. This panel will discuss the principles that underpin the movement to ensure that the personal autonomy, liberty, freedom, and dignity of each individual with intellectual and developmental disabilities is respected and supported.

Meeting Dental Needs for Individuals with Intellectual and Developmental Disabilities

Salon 3

Deborah Linton, Kyle Duffy

Five years ago, one of the most prevalent health concerns for individuals with intellectual and developmental disabilities was access to dental treatment. Since that time, The Arc of Florida has been developing a statewide network for dental services. The Florida Legislature has continually increased funding for this program as the outcomes have been significant for the individuals served as well as the Florida taxpayer. This session will assist participants in understanding how to gather information for potential funders in order to prove the need and the potential savings on other healthcare costs, recruit dentists willing to serve, and make the most of the funding provided for dental services through a screening process that includes an understanding of the patient population.

New Opportunities for Housing in Your Community

Salon 7

T. J. Sutcliffe, Andrew Sperling

New federal policies and programs are creating opportunities for state and local advocates to take action to support more affordable, accessible, integrated housing for people with disabilities in their communities. Learn about new National Housing Trust Fund, the new Affirmatively Furthering Fair Housing rule, and the modernized Section 811 Supportive Housing for Persons with Disabilities program.

FRIDAY, OCTOBER 28

The Resilience of Families and Individuals with Intellectual Disabilities*Salon 2**Nancy Murray*

Families of people with disabilities do more than cope and adjust. They become resilient. Resilience is a dynamic quality by which families focus on their strengths to build competence, avoid negative stresses, and address adversity. The concept of family resilience offers a strength-based approach to help families develop ways to manage inevitable stress, especially during transitions. A family resiliency approach does more than help a family during a crisis. It helps families realize how they weathered past experiences, develop strategies to manage stressful situations, and be more empowered to prevent a crisis and manage stress in the future.

10:45 AM – 12:00 PM BREAKOUT SESSIONS**Employment as Treatment: Individuals with Dual Diagnoses and Forensic Involvement***Salon 6**Chris Snell, Paul Van Almkerk*

The TREE program (a program of CLASS/Arc of Greater Lawrence) has been offering employment opportunities to individuals with developmental disabilities, mental health diagnoses, and forensic involvement in the northeastern region of Massachusetts since 1989. The presentation will provide an overview of the program approach and identify the emerging dually diagnosed (mental health and developmental disability) population of individuals receiving services funded by the Massachusetts Department of Developmental Services, Department of Mental

Health, and Massachusetts Rehabilitation Commission. An aggregate profile of this population and their unique, heightened risk of forensic involvement will be presented with opportunities for attendees to provide feedback related to their experiences with this population.

**Supported Decision Making: Part 2 of 2
What's Happening to Reform our Systems****INTERNATIONAL***Salon 1**Robin Shaffert, Samantha Crane, Richard Lavallo, Brendon Pooran, Monica Cortes, Dianah Msipa*

Increasingly, supported decision-making is being recognized in law and practice. This panel will discuss progress that has been made in the courts and state legislatures to recognize the rights of people with disabilities and seniors to make their own choices and to select their preferred methods of support and their supporters. We will also discuss what participants can do to continue to reform our systems so that the rights of all people to make their own choices are recognized.

**Moving from Crisis Intervention to Crisis Prevention:
Criminal Justice Training***Salon 7**Darla Stuart, Leigh Ann Davis*

People with intellectual and developmental disabilities face grave disadvantages when it comes to criminal justice involvement, as both victims and suspects/offenders. While they encounter discrimination as crime victims (such as testimony viewed as not credible), they also experience indifference or discrimination as suspects/offenders (for example, forced confessions resulting in needless, often traumatizing arrests and confinement). Another emerging issue is the inappropriate use of force by police against people with disabilities. Presenters will provide ideas and messaging on how chapters can respond. Participants will also learn about NCCJD's Pathways to

CONTINUED ON NEXT PAGE ►

FRIDAY, OCTOBER 28

Justice® Program, The Arc of Aurora's new law enforcement training videos, and other helpful tools advocates can use before, during, and after someone with intellectual and developmental disabilities becomes involved in the criminal justice system.

My Voice Matters**INTERNATIONAL – TRANSLATED IN SPANISH***Palm Ballroom 3 & 4*

Self-advocates around the world have a clear message: "Our Voice Matters". This session will highlight self-advocacy efforts underway around the world and what self-advocacy groups are doing to make sure their voice is heard on the issues that matter. It will highlight *Empower Us: A Global Network to Support Self-Advocacy* and how self-advocates around the world can link and connect to each other.

Policy to Action: Provider Transformation for Employment and Day Services*Salon 2*

Sara Genevieve "Genni" Sasnett, Dale Verstegen, Richard Davis

Come and hear from individuals who have made provider transformation for employment and day services a reality. This session will highlight best practices in provider transformation for employment and day services. The opportunities for meaningful systems change are great, and community integration for all—no matter their level of need—is closer than ever.

Understanding Dating, Relationships, and Sexual Boundaries*Salon 3**Frederika Theus*

Understanding the world of interpersonal relationships, including dating, may be overwhelming for any teen or adult. For individuals with intellectual and developmental disabilities, mastering the skills needed to maintain successful relationships presents unique challenges. The rules for appropriate behavior and boundaries are not usually directly taught, nor are they easily understood. Providing effective education increases the ability to engage in healthy relationships. In addition, we empower the capacity to protect against STDs and unplanned pregnancies, victimization, internet risks, and engagement in behaviors that may be considered inappropriate/illegal. In this session, the stages and process of sexuality education will be presented, along with strategies for addressing challenges often encountered by individuals with intellectual and developmental disabilities.

Unsheltered: Making Big Connections in Small Communities*Salon 8**Victoria Bryant, Raven LaBiche*

By providing services to a special population, our agencies can easily become a sheltered environment. Effective community connections and utilization of resources are positive tactics to assist your agency with growth, donations, volunteerism, integration, and community support. In small communities, resources are limited, making every connection vital for an agency to thrive.

Lunch On Your Own**12:00 PM – 2:00 PM**

FRIDAY, OCTOBER 28

Book Signing with Steve Silberman**12:00 PM – 2:00 PM***Salon 4 & 5*

Steve Silberman, award-winning science and author of *Neurotribes: The Legacy of Autism and the Future of Neurodiversity* will be signing copies of his book (which can be purchased at The Arc Store).

The Arc's Annual Business Meeting**12:30 PM – 3:00 PM***Palm Ballroom*

The Arc's Annual Business Meeting is where our chapter leaders convene to discuss and share their views about issues and concerns of people with intellectual and developmental disabilities and their families, as well as the future direction of The Arc. This year, the Business Meeting will feature:

- ▶ A listening session about The Arc's Public Policy Agenda 2017 – 2018.
- ▶ Insights offered by The Arc's Outgoing Board President, Ron Brown, by the Chief Executive Officer, Peter Berns, and the incoming Board President.
- ▶ Chapter representatives will vote on adoption of three position statements and on election of members to serve as officers and members of The Arc's Board of Directors.

The Arc's Business Meeting is OPEN to all. To vote, representatives must be credentialed in advance of the meeting. Representatives should pick up assigned keypads upon entry of the meeting. For any questions, stop by the registration desk.

2:00 PM – 3:00 PM BREAKOUT SESSIONS**Justice for Children: Ending Violence & Protecting Them from Harm****INTERNATIONAL***Salon 1****Sarah Stevenson***

Children with disabilities are three to four times more likely to be victims of violence, including sexual and physical violence, neglect, and bullying. Children with disabilities are also vulnerable to disability specific violence, including high rates of abuse in residential facilities, forced sterilization, violence in the guise of "treatment" and the deliberate inflicting of disability on children for the purposes of exploiting them for begging. A new Global Partnership to End Violence Against Children aims to "make societies safer for children and end violence against children everywhere". This session will profile the partnership and efforts to make a world free from violence possible.

Beyond The Ballot Box: Inclusive Political Participation**INTERNATIONAL***Salon 2****Jill Egle, Rebecca Irvine, Joachim Bosch, Fatma Wangare, Amanda Rich***

The right to be heard. The right to vote. The expectation that your voice matters and that your government should listen to you. The right to be active in your community—calling for change and holding governments accountable. These are basic rights that form the cornerstones of our society. Around the world, people with intellectual disabilities are denied their right to political participation. Both formally and informally, our communities lack the mechanisms to support people to exercise their right to political participation. This session will be about making political participation inclusive—how to tackle the

CONTINUED ON NEXT PAGE ►

FRIDAY, OCTOBER 28

barriers that people experience and empower people with intellectual disabilities to have a voice at the ballot box and in public policy.

Inclusive Education:

The Key to Inclusion in the Community

INTERNATIONAL – TRANSLATED IN SPANISH

Palm Ballroom 3 & 4

Diane Richler, Jeleel Odoom, Trish Grant, Mukunda Dahal, Maureen Piggot, Indiana Fonseca Salgado

Families and people with intellectual disabilities repeatedly tell Inclusion International that inclusive education is THE key to breaking down barriers and building inclusive communities. Research affirms that an inclusive education approach is better able to accommodate and include ALL children. Yet, individuals, families, and organizations report that accessing inclusive education remains very challenging. While we have lots of knowledge in our movement about “how-to” build and support inclusive education, we continue to struggle to make it a reality at a local level. To better link these efforts, Inclusion International is launching Catalyst for Inclusive Education: A Global Resource for Implementation. Come find out more about how your local organization can be supported to further inclusive education in your community.

Self-Advocacy, Self Determination, and Person-Centered Planning

Salon 6

Adonis Brown

To be a self-advocate is to want to effectively communicate, convey, negotiate, or assert his or her own interests, desires, needs, and rights. This is not always an easy thing to do when you’re surrounded by people (families, loved ones, care providers) who may feel they know what’s best for you.

People with intellectual and developmental disabilities need to empower each other! And it begins with knowing what is involved in “self-advocacy,” “self-determination,” and “person-centered planning.”

Strategic Planning to Action: Becoming a Culturally Competent Organization

Salon 3

Dawn Cooper, Christopher Metzler

The Arc’s 2016 – 2020 Diversity Strategic Action Plan focuses our efforts to become an even more powerful advocate for people with intellectual and developmental disabilities. By increasing awareness and participation by The Arc in diverse communities and attracting people of all ethnic and cultural backgrounds, The Arc’s new Diversity Strategic Action Plan speaks to achieving greater diversity and cultural competence at the national level, while also providing resources and supports for chapters to do so at the state and local level. Join us as we talk about how to position your diversity initiative for success and achieve your organizational mission and vision.

Refreshment Break

3:00 PM – 3:30PM

Grand Ballroom Foyer

*Sponsored by



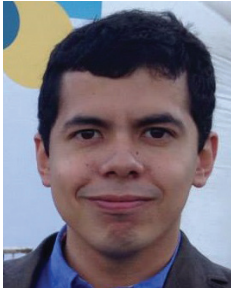
FRIDAY, OCTOBER 28



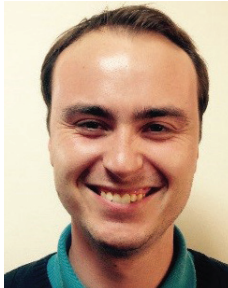
Cameron Northup



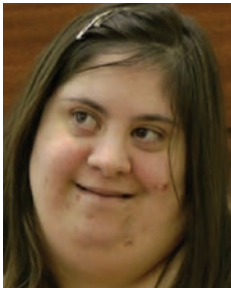
Donna Thornton



Luis Gabriel Villarreal



Harry Roche



Mia Farah



Patti Saylor

General Session

The Future of Advocacy & Inclusion as Told by The Arc and Inclusion International's Self-Advocates

3:30 PM – 5:00 PM

INTERNATIONAL – TRANSLATED IN SPANISH

Palm Ballroom

Cameron Northup, Donna Thornton, Luis Gabriel Villarreal, Harry Roche, Mia Farah, Patti Saylor

We have come a long way in our pursuit of inclusion for all people with intellectual and developmental disabilities across the globe, but we still face a number of challenges and obstacles. During the Global Self-Advocacy Leadership Summit, the future of self-advocacy was discussed in depth and plans for the future were developed. Self-advocate speakers from the Summit will provide a brief summary of the outcomes of this unique meeting, plans moving forward, and share details about Inclusion International's self-advocacy initiative *"Empower Us: A Global Network to Support Self-Advocacy"*.

During this session we will also be exploring some of the most important topics in the global disability rights movement, from the right to a job in the community to having children. Self-advocates from around the world will use their personal stories to bring to life the reality of these topics to show the need for action and advocacy is very real. The quality of life for individuals with intellectual and developmental disabilities is at stake, and we need to realize the importance of true social inclusion.

Ruth Luckasson will be presented with The Arc's 2016 President's Award during this session.



CATALYST AWARDS



THE ARC'S CATALYST AWARDS: RED CARPET SHOW EVENT

7:00 PM – 7:30 PM

Palm Ballroom Foyer

Join this year's amazing award winners as they rock the red carpet and get ready for an amazing celebration! Throw on your best cocktail attire, grab your camera, and get ready to strut your stuff! (The Red Carpet Event is open to all attendees. Tickets are required for the Catalyst Awards Dinner, available for purchase until Friday at 12:00 PM)

THE ARC'S CATALYST AWARDS

7:30 PM

Palm Ballroom

2016 Award Winners:

- ▶ *Author of the Year:* Steve Silberman
- ▶ *Community Advocate of the Year:* Patti Saylor & Erica Wheeler
- ▶ *Corporate Advocate of the Year:* Nike, Matthew Walzer, and Tobie Hatfield
- ▶ *Corporate Foundation Philanthropist of the Year:* Google.org
- ▶ *Educator of the Year:* Pablo Juarez
- ▶ *Foundation Philanthropist of the Year:* The Ruderman Family Foundation
- ▶ *Regional Business Employer of the Year:* Giant Eagle
- ▶ *Self-Advocate of the Year:* Connor Long
- ▶ *Television Show of the Year:* Born This Way, A&E, and Bunim/Murray Productions

This is a ticketed event, pre-registration is required (\$)

PROGRAM

FRIDAY, OCTOBER 28

The Arc & Sprout Film Festival

7:30 PM – 9:30 PM

TBA

*Sponsored by  **MERCER**

The Arc & Sprout National Film Festival continues to be an attendee favorite and we don't see this year being any exception. The evening festival will showcase powerful, thought-provoking films from around the world. Don't miss this exciting event. *This event is complimentary, but pre-registration is required.*

SATURDAY, OCTOBER 29

State Presidents Breakfast

7:30 AM – 8:30 AM

Poinsettia/Quince – 2nd Floor

Continental Breakfast

8:00 AM – 9:00 AM

Grand Ballroom Foyer

9:00 AM – 10:00 AM BREAKOUT SESSIONS

Assisted Dying Laws: Can They Be Stopped? Can Safeguards Be Effective?

INTERNATIONAL

Salon 6

Michael Boch, Oonagh Smith, Jeanne Nicklas-Faust, Tony Anderson

Many countries are grappling with the issue of doctor-assisted death. This session will share experiences from

North America and Europe, and will look at countries where legislation is in place and those where it is being considered. The session will offer strategies to ensure people with intellectual disabilities are protected.

Department of Labor Overtime Rule Implications and How to Comply

Salon 1

David H. Spalter, Nicole Jorwic

The Department of Labor released the much anticipated final Overtime Rule on May 18, 2016, with an effective date of December 1, 2016. Along with the rule, DOL announced a non-enforcement policy for providers of Medicaid-funded services for individuals with intellectual and developmental disabilities. Come and hear about the new rule, how the non-enforcement policy applies to you, and options that employers have to come into compliance with the rule.

Employment: Meaningful Work

INTERNATIONAL – TRANSLATED IN SPANISH

Palm Ballroom 3 & 4

Don Gallant, Maria Jose Cabezudo, Vichetra Kong, Tonny Mortensen, Torben Wind

Employment is an important part of our adult lives. It helps give us an identity and fosters a sense of belonging. It helps us be seen as contributors to our communities. Around the world, people with intellectual disabilities are chronically unemployed or underemployed. While we have many examples of employment models—including supported employment, private-public partnerships and self-employment—significant challenges persist in supporting all people with intellectual disabilities, regardless of their level of support need, to gain meaningful employment of their choosing in the open labor market. How do we make it happen? How can we make our models work better so people can get to work?

SATURDAY, OCTOBER 29

Invisible Autism: Calling for Enhanced Chapter Competency & Policy Change*Salon 2**Dena Gassner*

The misconception of "high functioning" is having tragic results. Current research demonstrates that individuals with less obvious forms of autism are at high risk for late term cancer, suicide, complex medical concerns, domestic violence, homelessness, unemployment, and complex reproductive/maternal issues. Sadly, many of these very individuals approach chapters of The Arc for help are sometimes unsuccessful in requesting and receiving meaningful support due to a lack of understanding of their less obvious expression of disability. In this presentation, participants will learn key research evidence (as shared previously this year in a session with the Government Accountability Office for Congress).

The Three R's of Transition to Adulthood: Responsibility, Regulation, and Relationships*Salon 3**Nancy DeSando, Shaloni Winston*

Transition to adulthood presents significant challenges for young adults with intellectual and developmental disabilities. This session will demonstrate a unique approach involving skill-building classes in the areas of responsibility, regulation, and relationships combined with peer mentoring in real life settings. These strategies are designed to help young adults' successfully complete college and/or maintain meaningful employment. Participants will interact to discuss the challenges they have seen and presenters will offer a person-centered approach to build a plan for teaching and supports to gain independence. We'll discuss partnerships

with local businesses and community colleges and show how our goal is to prepare them for successful lives and careers, reaching dreams they never thought possible!

Transforming Services to Support Inclusion**INTERNATIONAL***Salon 8**Elaine Robb, Shelley Fletcher, Kory Earle, Kevin Stone, Alastair Graham*

Inclusive communities require all of us to think differently about how people with intellectual disabilities are supported to live and be included in the community. To respond to what people with intellectual disabilities and their families want, services need to transform and be part of a community-building approach. This international session will explore innovative approaches to services like housing and benefits. It will look at the role of services and family-based organizations in navigating community and facilitating relationships.

Update on ABLE Act Federal Activity and State Implementation*Salon 7**Marty Ford, Deborah Goodkin, Mary Morris, David Bell*

ABLE accounts are now becoming available. We will review Federal activity since passage in December of 2014, and state implementation processes. What are ABLE accounts and what could they mean to you or your family members? This session will be most useful to individuals, family members, and chapter staff interested in this new approach to savings for people who use federal benefits like Supplemental Security Income (SSI) and Medicaid. This will also be an opportunity to hear from some state ABLE programs.

SATURDAY, OCTOBER 29



Closing General Session

The Power of The Sibling Bond

10:30 AM – 12:30 PM

INTERNATIONAL – TRANSLATED IN SPANISH

Palm Ballroom

Walter and Owen Suskind, stars of the new documentary film *Life, Animated*, join us to have an open conversation about their relationship and the importance of the sibling bond. Clips of the film will provide guidance for an in depth discussion about sexuality and relationships, the struggles and joys of being a sibling, and bullying—issues that resonate with self-advocates and families around the world. The Suskind brothers will also join in a discussion with other family members from our movement to discuss these topics and more.

PROGRAM

SATURDAY, OCTOBER 29

Inclusion International Council Meeting

1:00 PM – 4:00 PM

Azalea / Begonia Second Floor

Resident Fund Management Service

- Direct Deposit of US Treasury & Pension Checks
- Improve Cash Flow
- Free Integrated Banking & Client Trust Software
- Automated Account Reconciliation
- Improved Process Controls
- Automated Posting of Payments
- Direct Debits from Family Member Accounts

800-632-7367

www.nationaldatacare.com

Breathe easy,
we've got you covered

Expense Management Platform
for Human Service Providers

Eliminate Checks



Reduce Oversight



Customize Spending



Simplify Reconciliation



For more information please contact Frank Festa, 646.518.3951

The PEX Visa Prepaid Card is issued by The Bancorp Bank pursuant to a license from Visa U.S.A. Inc. and may be used everywhere Visa debit cards are accepted. The Bancorp Bank; Member FDIC.



ENTREPRENEUR ALLEY

Be sure to stop by Salon 4 & 5 to visit the exhibits of self-advocates and entrepreneurs to support their small businesses!

Born This Way

From the Emmy Award-Winning Show, Born This Way...

John Tucker

John has done background for parts in numerous movies. After becoming a member of the cast, "Born This Way", John was able to express himself creatively and develop his skills as a rapper. Since joining the cast of "Born This Way", John has performed his music at a number of venues.

Megology

Megan Bomgaars is a surface design artist. She creates original, one-of-a-kind textiles and fabrics by incorporating unusual techniques such as dyeing with ice, manipulating fiber, reactive dyes and the use of colorants. Her clothing line includes baby onesies, book bags, scarfs, socks, t-shirts, tanks, and more. Megology is beautiful wearable art from the heart of entrepreneur Megan Bomgaars.

Sean McElwee

Three books written about Sean McElwee, including "Who's the Slow Learner? A Chronicle of Inclusion and Exclusion," the first book to chronicle a student with special educational needs from preschool through high school graduation. "My Name is Sean and I Have Something to Share," introduces children to Down syndrome. And "Adventures in Independence" follows Sean into adulthood.

Creative Magnetic Artists

Residential support services are our organization's name. Our clients produce magnetic jewelry, tie-dye onesies and socks, braided dog ropes, and rugs.

Espocinema

Espocinema is the creative channel for filmmaker Adrian Esposito, this year's NCE Lifetime Achievement Award Recipient. Adrian's own challenges with autism bring a unique perspective to his films that

resonate with many people facing similar challenges in life. Many of Espocinema's films deal with topics related to developmental disabilities.

Nathaniel Boutelle Photography

Nathaniel Boutelle Photography was created out of a passion to capture moments of time. Nathaniel, better known as Than, lives in a rural setting in Northern Indiana. This allows numerous opportunities with its seasonal changes, for nature to be the subject of his photography. Portrait sessions are also available.

Nick's Art Project

Nick's Art Project promotes access to art and music therapy for individuals with disabilities. As an award-winning artist living with autism, President and CEO Nicholas Gammicchia benefitted from such services and now works to ensure others have access via scholarships from funds raised through the organization.

RaceCAR Waterboy, LLC

RaceCAR Waterboy is a micro-enterprise NASCAR company. The owner has authored a Micro-enterprise 25 Step business plan workbook; books on his life story about school, independent living, working with NASCAR, and buying his own house; and BROWN BOOK, a book self-advocates, parents, and staff can use to cut the apron strings.

Royal DJs, Inc.

The Royal DJs are a non-profit corporation made up of differently-abled young adults who are DJs who love to play music for events. While some of the DJs are non-verbal, all are able to communicate—music is a universal language! Their goal is to play music to entertain others and to educate others with their message of inclusion and acceptance.

ScentsAbility Candles

ScentsAbility helps young adults with developmental disabilities learn job skills. Our candle factory and retail store produces soy candles and scented products; all made by our amazing team. ScentsAbility offers private label, corporate gifts, party favors along with Parties that make SCENTS - a candle making party experience. www.scentsability.org 954.234.4405



SPECIAL NEEDS REQUIRE SPECIALCARESM

When you're ready, we're here to help. MassMutual's Special CareSM program provides access to information, specialists and financial products and services to help families facing the financial responsibilities of raising a child with a disability or other special needs. To learn more about how a financial professional can help your family, visit [MassMutual.com/SpecialCare](https://www.massmutual.com/SpecialCare)



We'll help you get there.®

LIFE INSURANCE + RETIREMENT/401(K) PLAN SERVICES + DISABILITY INCOME INSURANCE + LONG TERM CARE INSURANCE + ANNUITIES

MassMutual Financial Group refers to Massachusetts Mutual Life Insurance Co. (MassMutual) and its affiliated companies and sales representatives. Insurance products are issued by MassMutual, Springfield, MA 01111, and its subsidiaries, C.M. Life Insurance Company and MML Bay State Life Insurance Company, Enfield, CT 06082. CRN201710-177392



MediSked is pleased to be a part of Shaping the Future to support more meaningful lives through solutions that support our community.



Not Your Average **ABLE** Savings Plan!



ABLE



FOR



ALL



**Helping You Achieve Your
Financial Empowerment**

For more information visit
ABLEforALL.com or email us at
Oregon.ABLE@ost.state.or.us



DirectCourse
ONLINE CURRICULA FOR LIFE IN COMMUNITY

Change lives with training from DirectCourse.

We offer exceptional online training, for the direct service workforce, that's built on the latest research and delivered via a powerful learning management system (LMS). Our courses offer:

Expert Content • Compliance Tracking • Customizable Training


Learn about our courses and how they can help your organization today!

ELSEVIER



DirectCourse is a collaboration between Elsevier and the University of Minnesota's Research and Training Center on Community Living.

www.directcourseonline.com



Enjoy the flexibility of training your entire staff *anywhere, anytime.*

*"We use Relias to train our service providers,
as a tool for employee development, as well as
create our own classes that meet our unique
training needs." - VP of Client Services*

**Come visit
our booth.**

RELIAS || LEARNING



Flexible



Consistent



Trusted

Accreditation Matters



Accreditation assures the persons served, funders, and partners that an organization is committed to continually improving services, encouraging feedback, and serving the community.

To learn more about CARF and how accreditation can help your organization, email ecs@carf.org or call (888) 281-6531.

Scan the QR code for program descriptions



carf INTERNATIONAL

www.carf.org

Philadelphia Insurance Companies proudly supports of The Arc's 2016 National Convention

To learn more about PHLY's Non-Profit products visit:

PHLY.com/SocialServices

800.873.4552



**PHILADELPHIA
INSURANCE COMPANIES**

A Member of the Tokio Marine Group

Walmart
Grocery

Fast, free grocery pickup
now available!

Walmart.com/grocery

**We'll do
the shopping
for you**

\$10 off
with promo code
WMTCARES
at checkout*

How it works



Order online

Shop anytime, anywhere.
Choose a convenient pickup time
and location.



We'll do the shopping

Experts pick the freshest items
or your money back.
We'll even load your car in minutes.



Pickup is FREE

No service fees or markups.
Get the same Every Day Low Prices
found in stores.

* Offer valid for first order only for Walmart Grocery online service, at participating stores. Minimum order of \$50. Offer not transferable, and void where prohibited by law. Does not apply to alcohol purchases. Customer responsible for all applicable taxes. Offer expires January 31, 2017.

HEALTH CARE WORKS BEST WHEN IT REVOLVES AROUND THOSE WHO RECEIVE IT



HEALTHIER IS HERE

As a health services and innovation company, Optum powers modern health care by combining data and analytics with technology and expertise. The result is more comprehensive, personalized care that yields successful outcomes at reduced cost.

optum.com/government

ABLEnowSM

Nationwide enrollment opens in 2016



Tax-advantaged
ABLE savings
accounts for
individuals with
disabilities



Save for qualified
expenses while
protecting
disability
benefits



Maintain
health,
independence
and quality
of life

Learn more and subscribe to updates:
able-now.com | 1-844-NOW-ABLE
(1-844-669-2253)

Call 1-844-NOW-ABLE or visit able-now.com to obtain information on the program. For non-Virginia residents:
other states may sponsor an ABLE plan that offers tax or other benefits not available through ABLEnow.
© 2016 Virginia College Savings Plan. All Rights Reserved.

33RD NADD ANNUAL CONFERENCE & EXHIBIT SHOW 2016

NOVEMBER 2-4 ♦ NIAGARA FALLS, ONTARIO

Weaving Solutions: Research/Policy/Practice in IDD/MI

Including:

- ♦ A Pre-Conference Symposium
- ♦ Keynote Addresses
- ♦ Concurrent Sessions
- ♦ Breakfast Consultations with the Experts

BROCHURE AND REGISTRATION
IS AVAILABLE NOW AT
thenadd.org

A close-up photograph of a young child with Down syndrome, smiling and looking slightly to the right. The child has brown hair with bangs and is wearing a light-colored corded vest over a white long-sleeved shirt. An adult's hand is visible, gently holding the child's head from behind. The background is a soft-focus outdoor scene with green foliage and a blue sky.

Special needs
require special
attorneys.

Special Needs
Alliance®

(877) 572-8472

SpecialNeedsAlliance.org



Save the Date!

2017 Disability Policy Seminar

Join us again,

March 20–22, 2017

Renaissance Washington, DC

Downtown Hotel

DISABILITYPOLICYSEMINAR.ORG