



Security & Stability

Paid Family and Medical Leave and
its Importance to People with Disabilities
and their Families



KALI GRANT,
T.J. SUTCLIFFE,
INDIVAR DUTTA-GUPTA,
AND CASEY GOLDBALE

FALL 2017
UPDATED OCTOBER 1, 2017

Georgetown Center on Poverty and Inequality (GCPI)

The Georgetown Center on Poverty and Inequality works with policymakers, researchers, practitioners, and advocates to develop effective policies and practices that alleviate poverty and inequality in the United States.

The center's areas of work include national, state, and local policy and program recommendations that help marginalized girls, promote effective workforce and education policies and programs for disconnected youth, and combat deep poverty.

Our strategies are to partner with federal agencies and non-profit organizations to host national conferences, produce and widely disseminate in-depth reports, engage in public speaking, and participate in national coalitions and working groups.

GCPI's Economic Security and Opportunity Initiative

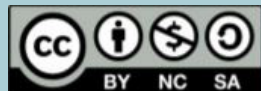
The mission of GCPI's Economic Security and Opportunity Initiative (ESOI) is to expand economic inclusion in the United States through rigorous research, analysis, and ambitious ideas to improve programs and policies. Further information about GCPI's ESOI is available at www.georgetownpoverty.org.



The Arc

The Arc promotes and protects the human rights of people with intellectual and developmental disabilities and actively supports their full inclusion and participation in the community throughout their lifetimes and without regard to diagnosis. The Arc has a network of over 650 chapters across the country. Further information about The Arc is available at www.thearc.org.

Copyright



Copyright Creative Commons (cc) 2017 by Kali Grant, T.J. Sutcliffe, Indivar Dutta-Gupta, and Casey Goldvale.

Notice of rights: This report has been published under a Creative Commons license. This work may be copied, redistributed, or displayed by anyone, provided that proper attribution is given and that the adaptation also carries a Creative Commons license. Commercial use of this work is disallowed.

Security & Stability

Paid Family and Medical Leave and its Importance to People with Disabilities and their Families

KALI GRANT,
T.J. SUTCLIFFE,
INDIVAR DUTTA-GUPTA,
AND CASEY GOLDBALE

FALL 2017
UPDATED OCTOBER 1, 2017



Acknowledgements

We appreciate the generous assistance provided by the following individuals, who shared their insights and advice and reviewed drafts of this report: Julia Bascom, Alexandra Bradley, John Butterworth, Joe Caldwell, Wendy Chun-Hoon, Lisa Ekman, Shawn Fremstad, Pronita Gupta, Aparna Mathur, Kathleen Romig, Isabel Sawhill, Vicki Shabo, Rebecca Vallas, Preston Van Vliet, and Ben Veghte. At the Georgetown Center on Poverty and Inequality, Huixian “Anita” Li provided substantial research assistance and writing; Aileen Carr contributed research, editing, and writing; Sophie Khan provided essential quantitative and secondary research and editing assistance; and Christopher Brown provided research and editing assistance. At The Arc, Marty Ford, Kristen McKiernan, Robin Shaffert, and Julie Ward provided editing assistance; Kiley McLean contributed research assistance. Thanks to Jay Christian of Jay Christian Design for the report’s design and layout. Any errors of fact or interpretation remain the authors’.

Unless otherwise noted or sourced, data analysis uses IPUMS USA microdata from: Steven Ruggles, J. Trent Alexander, Katie Genadek, Ronald Goeken, Matthew B. Schroeder, and Matthew Sobek. “Integrated Public Use Microdata Series: Version 5.0 [Machine-readable database].” Minnesota Population Center [producer and distributor], 2010.

Table of Contents

Acknowledgements	1
Table of Contents	2
Introduction	3
Disability and Work in the United States	5
<i>Box 1. Economic Insecurity and Disability are Intertwined</i>	5
Disability is Prevalent Throughout the Life Course	6
<i>Figure 1. A Large Share of Older Adults Experience Disability</i>	6
Workers of Color with Disabilities Face Disproportionate Barriers to Employment and Economic Security	7
<i>Figure 2. People with Disabilities Face Substantially Higher Unemployment Rates Across Racial and Ethnic Groups</i>	7
Most Adults with Disabilities are Striving to Work, but Often Face Barriers to Employment	8
<i>Figure 3. Men and Women with Disabilities Face Substantially Lower Employment Rates</i>	8
Workers with Disabilities are More Likely to be in Part-time, Lower-Wage Positions	9
Workers with Family Members with Disabilities are More Likely to Experience Undesirable Labor Force Status	9
Families with Members with Disabilities Experience Worse Economic Outcomes	9
<i>Figure 4. Households with at Least One Member with Disabilities Face Higher Poverty Rates</i>	10
The Importance of Paid Leave for People with Disabilities and Their Families	11
<i>Box 2. What is Paid Leave?</i>	12
Paid Leave Boosts Economic Security and Opportunity for People with Disabilities and their Families	12
<i>Figure 5. The Finances of People with Disabilities</i>	13
Paid Leave Helps Workers with Disabilities Care for Themselves	14
Paid Leave Helps Workers Care for Family Members with Disabilities	14
<i>Figure 6. Almost Three Quarters Take Leave for Own or Family Member's Illness</i>	15
<i>Figure 7. A Significant Portion of Employees Take Leave for Ongoing Health Condition</i>	15
Paid Leave Improves Family Well-Being	17
The State of Paid Leave for People with Disabilities in the United States	18
Key Policies	19
Federal Law	19
<i>Box 3. International Comparisons</i>	20
<i>Figure 8. The U.S. is the Only OECD Country that Does not Mandate Any Parental Leave</i>	20
State and Local Laws	21
People with Disabilities and their Family Caregivers Are Ill-Served by Current Leave Policies	21
<i>Access to Paid Leave is Limited, Especially for Families that Include People with Disabilities</i>	21
<i>Even When Available, Paid Leave is Often Out of Reach</i>	22
Conclusion and Policy Recommendations	24
Appendix	26
Endnotes	31



Introduction

Nearly 1 in 5 people in the United States have a disability (40 to 57 million,¹ and potentially more).² Physical, mental, and sensory disabilities affect people of all ages, including around 3.7 million children, 26.3 million working-age adults, and 17.4 million seniors.³ And with the aging of the population, the share of the population with disabilities is expected to rise.⁴ With fewer non-working adults in households than in generations past, unpaid caregiving responsibilities increasingly fall on workers.^{5, 6} In addition, increased use and recognition of modern family structures have helped illuminate gaps in current work-family policies. The prevalence of disabilities across the lifespan and changing demographic landscape indicate the need for more comprehensive policies that can address the realities of modern work-family balance needs.

Paid family and medical leave (PFML or “paid leave”)⁷ empowers workers with the freedom to balance competing personal, financial, and workplace responsibilities. Research has demonstrated that access to paid leave can be transformative for health and socioeconomic well-being.⁸ At the same time, economic stability for individuals with disabilities, including through employment, has for decades been a core goal of the disability rights movement, promoting the full participation and inclusion of people with disabilities in all aspects of community life.⁹ Like all workers, workers with disabilities may need to access paid leave to welcome a new child, to provide care for a family member with a serious medical condition, or if they experience their own serious medical condition. Despite policymakers’ apparent interest in both paid leave and in increasing employment and economic security among households with disabilities,^{10, 11} the two issues are rarely discussed together.

Job-protected paid leave has wide-ranging benefits for workers and their families, employers,¹² and society as a whole.¹³ Well-designed paid leave promotes employment and income security:¹⁴ it is associated with higher overall labor force attachment,^{15, 16} improved employee retention, and talent attraction, all with little to no harm to employers.^{17, 18} Recognizing these and other benefits, majorities of voters^{19, 20} and many employers²¹ support paid leave. States and localities throughout the country are also increasingly exploring and adopting paid leave policies.²²

The United States is far from achieving a system of universal and equitable paid leave with adequacy that matches the reality of family and medical needs today. While progress has been made at the state and local levels, and some employers offer certain workers some paid leave, the United States stands virtually alone among wealthy countries in not guaranteeing PFML.²³ Just 68 percent of all civilian workers have access to any paid *sick* leave to address one's own health condition; only 14 percent have access to paid *family* leave that they can use to address a serious health condition of a family member.²⁴ Most workers also lack access to dedicated *parental* (maternity or paternity) leave to care for a newborn baby or newly adopted child.^{25, 26}

Lack of paid leave can force a cruel and unnecessary tradeoff: health and family, or work and financial stability. Workers often cannot afford to jeopardize their job security by taking time off or forgoing lost wages each time they or a family member needs support.²⁷ For workers with disabilities or workers who are unpaid caregivers of family members with disabilities, this tradeoff can be especially daunting. As described in this report, people with disabilities and their families on average are more likely to have lower incomes and savings. They are also more likely to face barriers to employment that can render the financial impact of unpaid time off particularly devastating.

The purpose of this report is to explore the importance of paid medical, family, and parental leave for workers with disabilities and unpaid family caregivers (who may or may not themselves have a disability) of children, parents, or other family members (working or not) with disabilities. In other words, the report focuses on paid leave for both people with disabilities who receive care and people with or without disabilities who provide supports and services to them. The report begins with a brief overview of statistical data on disability and work in the United States. It then explores the benefits of paid leave for people with disabilities and their families before providing an overview of current access to and utilization of paid leave. Finally, it outlines principles to maximize the impact and reach of paid leave for people with disabilities and their families.²⁸



Disability and Work in the United States

To develop an understanding of the importance of paid leave for people with disabilities and their families, this section highlights key demographic data describing disability in the United States.^{29, 30} We estimate that there are 26.3 million working-age adults with disabilities, along with 36 million working age adults with family members with disabilities.³¹ For the purposes of this report, we estimate that approximately 47.1 million Americans have disabilities.³² These individuals and their households are diverse, but having a disability is more common among some groups, as noted below.

BOX 1

ECONOMIC INSECURITY AND DISABILITY ARE INTERTWINED

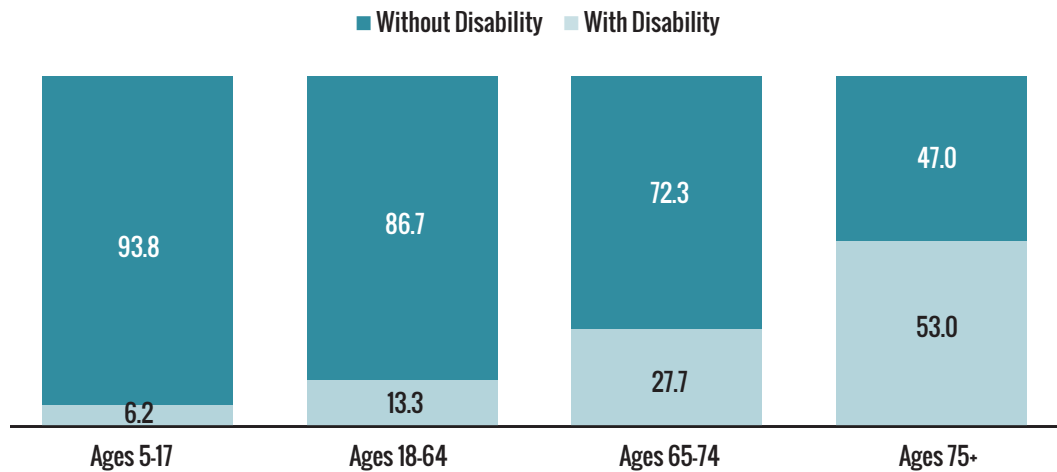
The causes and effects of disability are intrinsically tied to issues of economic insecurity and instability—which disability can cause or result from. As the Center for American Progress has noted, disability can cause insecurity because “disability or illness can lead to job loss and reduced earnings, barriers to education and skills development, significant additional expenses, and many other challenges that can lead to economic hardship.”³³ Disability can also be a consequence of income insecurity and volatility,³⁴ which are associated with numerous factors that can exacerbate disabilities and illnesses, including limited access to health care and preventive services,³⁵ greater risk of hunger and inadequate nutrition,³⁶ and increased exposure to environmental hazards³⁷ and workplace hazards.^{38, 39} Disability’s connection with insecurity can be exacerbated by inadequate and non-inclusive work policies and practices.⁴⁰

Disability is Prevalent Throughout the Life Course

Disability can occur at any age, but older age is associated with higher disability rates. In 2015, while only 13 percent of people age 18 to 64 reported experiencing disability, more than half of those age 75 and above did so.⁴¹ A worker entering the workforce today faces a 1 in 3 chance of becoming disabled for 3 months or more during their working career.⁴² The odds of being disabled for a healthy 35- to 45-year-old male during his working career is about 1 in 6.⁴³

FIGURE 1. A Large Share of Older Adults Experience Disability

Age Distribution of Disability in the U.S., 2015



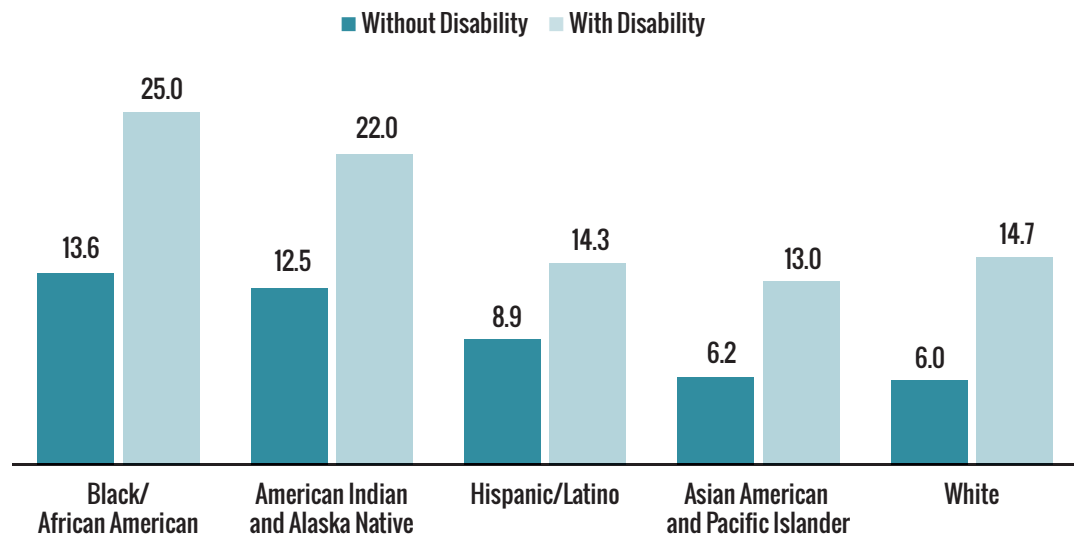
Source: Authors' calculations using the American Community Survey five-year sample (2011-2015).

Workers of Color with Disabilities Face Disproportionate Barriers to Employment and Economic Security

The data also show a significant difference among racial groups of both the incidence of disability and the labor force outcomes for people with disabilities. In 2015, African Americans (19 percent) and American Indians and Alaska Natives (22 percent) saw a greater incidence of disability than Whites (17 percent) and Asian American and Pacific Islanders (8 percent).⁴⁴ People of color with disabilities also experienced much higher rates of joblessness than White people with disabilities. As shown in Figure 2 below, among individuals with a disability in 2015, the unemployment rate for African Americans (25 percent), far surpasses jobless rates for Whites (15 percent).⁴⁵ Research also suggests that among women with disabilities who received vocational rehabilitation services or are receiving Social Security Disability Insurance or Supplemental Security Income, African American women are less likely to be employed than White women.⁴⁶

FIGURE 2. People with Disabilities Face Substantially Higher Unemployment Rates Across Racial and Ethnic Groups

Unemployment Rate by Disability Status and by Race, Age 18–64, 2015



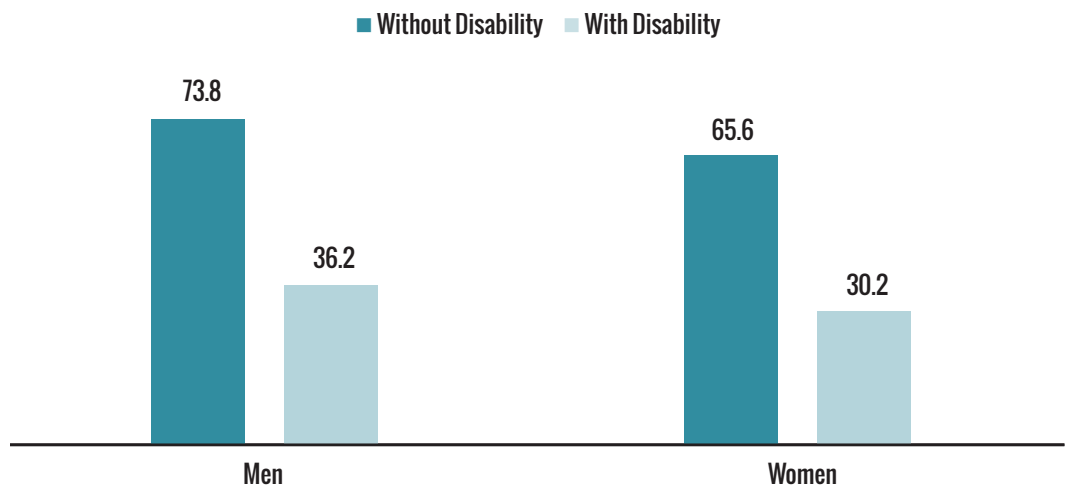
Source: Authors' calculations using the American Community Survey five-year sample (2011-2015).

Most Adults with Disabilities are Striving to Work, but Often Face Barriers to Employment

Even after controlling for gender, race, ethnicity, level of educational attainment,⁴⁷ or age,⁴⁸ having a disability is linked with increased rates of unemployment and underemployment, and a decreased likelihood of being in the workforce. In 2015, 75 percent of people aged 18 and above without disabilities in the U.S. were employed, and their unemployment rate was 7 percent.⁴⁹ In stark contrast, only 34 percent of people with a disability were employed, and their unemployment rate (16 percent) was more than twice of that among their counterparts without a disability.⁵⁰

FIGURE 3. Men and Women with Disabilities Face Substantially Lower Employment Rates

Employment Rate by Gender and by Disability Status, Age 18 and Over, 2015



Source: Authors' calculations using the American Community Survey five-year sample (2011-2015).

Despite these gaps, adults with disabilities are striving to work—40 percent are currently working or are looking for work—but often face great barriers both in the workplace and job search.⁵¹ In the workplace, 17 percent of current workers with disabilities report getting less pay than others in a similar job, 16 percent report negative attitudes on the part of their supervisor, and another 16 percent report negative attitudes on the part of their coworkers.⁵² Fully 1 in 3 employment discrimination charges filed with the U.S. Equal Employment Opportunity Commission allege discrimination on the basis of disability.⁵³ Job seekers with disabilities report a variety of barriers in the job search process, including employers assuming they cannot do the job (36 percent) and a lack of transportation to travel to interviews or a job (26 percent).⁵⁴

Workers with Disabilities are More Likely to be in Part-Time, Lower-Wage Positions

Among the people with disabilities who are employed, work is more likely to be part-time and in positions with lower wages.⁵⁵ In 2015, working-age people with disabilities' median personal income was approximately \$12,100, which was half the national median income among all working-age people.⁵⁶ About 40 percent of workers with a disability were employed part-time in 2015, as opposed to only roughly 30 percent of those with no disability.⁵⁷ One in every four individuals with a disability lives in poverty.⁵⁸ In fact, individuals with a disability are more likely to experience long-term poverty: 65 percent of those living in long-term poverty (over a 48-month period) are individuals with a disability.⁵⁹

Workers with Family Members with Disabilities are More Likely to Experience Undesirable Labor Force Status

As noted above, disability and economic insecurity are often intertwined. The approximately 36 million working age people who live with at least one other household member with a disability experience lower labor force participation rates (68 percent), higher unemployment rates (13 percent), and are more likely to be working part-time (35 percent) than their counterparts who have no additional household members with disabilities. They are also more likely to live in poverty (18 percent) or near poverty (40 percent) than the national averages.⁶⁰

Maintaining the balance of work and care duties is difficult for workers in general, but it is particularly challenging for workers who also provide unpaid support and care to family members. A recent survey by the National Alliance for Caregiving (NAC) and AARP found that 6 in 10 unpaid caregivers reported experiencing at least one impact on work or change to their employment situation as a result of caregiving, such as cutting back on their working hours, taking a leave of absence, or receiving a warning about performance or attendance, among other such impacts.⁶¹ One survey found that more than 70 percent of family caregivers for people with intellectual disability and developmental disabilities reported that caregiving interfered with their work and 20 percent reported that someone in the family quit their job in order to provide care.⁶² The same survey also found that parents whose child had intellectual disability/developmental disability reported due to their child's health, they had not taken a job (36 percent), changed work hours (29 percent), worked fewer hours (26 percent), quit working (17 percent), or turned down a better job (17 percent).⁶³

Families with Members with Disabilities Experience Worse Economic Outcomes

Across multiple measures, families that include one or more person(s) with a disability (child, adult, or senior) have less secure household finances. More than a quarter (29 percent) of U.S. households have at least one member with a disability.^{63, 64} Households with one or more members with a disability have an average household income of about \$51,600, compared to about \$70,500 for households where no household members have a disability.⁶⁵ Over half of households with at least one working-age adult with a disability live in or near poverty (200 percent of the Official Poverty Measure or below).⁶⁶ Six in every 10 households caring for at least one minor child with a disability live in or near poverty.⁶⁷

Households that include one or more members with a disability have an average net worth of \$62,375, or roughly two-thirds of the net worth of those without one (\$90,350).⁶⁸ Households with one or more members with a disability also have assets in a financial institution (\$2,250) worth half of those held by households with no member with a disability (\$5,000).⁶⁹ This disparity is also present in long-term savings: households with one or more household members with a disability have \$10,000 less in retirement savings than those without one.⁷⁰

FIGURE 4. Households with at Least One Member with Disabilities Face Higher Poverty Rates

Percent of Households Living in or Near Poverty (at or Below 200% of the Official Poverty Measure) by Household Member Disability Status, 2015



Source: Authors' calculations using the American Community Survey five-year sample (2011-2015).



The Importance of Paid Leave for People with Disabilities and Their Families

Paid leave is a core part of a health and economic security system that supports work, independence, financial stability, and opportunity for people with disabilities and their families, especially in low- to middle-income working households. Individuals with disabilities and their families commonly experience ongoing tensions between demands on household finances, health and well-being, and work. To be sure, paid sick days, fair scheduling, workplace accommodations, civil rights enforcement, and other strategies are needed to achieve these goals. However, PFML is an essential but underutilized policy tool that can support employment and help mitigate some of the demands—both long- and short-term—that workers with disabilities and their families may encounter. A recent report by The Leadership Conference Education Fund interviewed low-wage workers and found that many fear that “staying home when they or a loved one are sick or in need will mean not only the loss of a day’s pay but also the possible loss of their job.”⁷¹ When workers have access to paid family and medical leave, their options for taking care of themselves and their families expand. Below, some of the key benefits of PFML for people with disabilities and their families are profiled.

BOX 2

WHAT IS PAID LEAVE?

Paid family and medical leave (PFML) refers to the ability of workers to receive partial or full compensation for short- to long-term periods while providing or receiving care or rest for one's own or a family member's serious and/or chronic health condition, or caring for a newborn or newly adopted child. Generally PFML is categorized into three kinds: personal, parental, or family. Recognizing that what is meant by "paid family" versus "parental" leave can overlap, this brief focuses less on those distinctions and instead characterizes leave in terms of its relationship to the worker—e.g., whether the leave is for one's own or a family member's needs.⁷²

Paid family and medical leave typically—but not always—includes job protection, and can also include a guarantee that employer-sponsored health coverage will continue during leave and that seniority will be maintained upon return to work. Paid leave can be financed and provided by employers, employees, or some combination of the two. It generally can be used at least somewhat intermittently—for hours or days—rather than all at once or solely in blocks of weeks or months.

Paid leave is generally distinct from but related to a number of other policies that provide pay for time away from work for a compelling reason. For example, paid sick days, which are financed and provided by employers—sometimes due to a government mandate—and are measured in days and often require limited documentation of medical conditions. Paid leave is typically measured in weeks or months, specifies qualifying events, and often requires more extensive medical or other documentation. Paid time off (PTO) provides employees time off for a variety of reasons (i.e. vacation, illness, or personal), but typically does not add up to several weeks or months. PTO is may be combined with paid or unpaid leave for those who have access to these options and require longer periods away from work. Some governments and employers provide short-term or long-term disability insurance, which can be similar or identical to paid medical leave, but do not offer parental leave for births (mothers giving birth are typically covered, but new parents not giving birth are not). In some cases, long-term disability insurance may offer lengthier periods of pay when one is unable to work than paid leave. Finally, temporary caregiver insurance may offer parental leave and leave for caring for a family member who is ill.

Paid Leave Boosts Economic Security and Opportunity for People with Disabilities and their Families

Because households that include individuals with disabilities often have low to moderate incomes, any time off taken by a working adult could result in severe economic consequences—and for many, the impact of job loss could be financially devastating. When workers have access to job-protected paid leave, they and their families can avoid some of the pitfalls often associated with taking time off work, including lost income and potential depressed wages in the future.⁷³ PFML that replaces a sufficient percentage of wages may also enable workers to take time off rather than being forced to switch to part-time work or to a lower-paying job. Part-time work on average comes with less pay, fewer employer-provided benefits, and often less opportunity for career advancement.⁷⁴

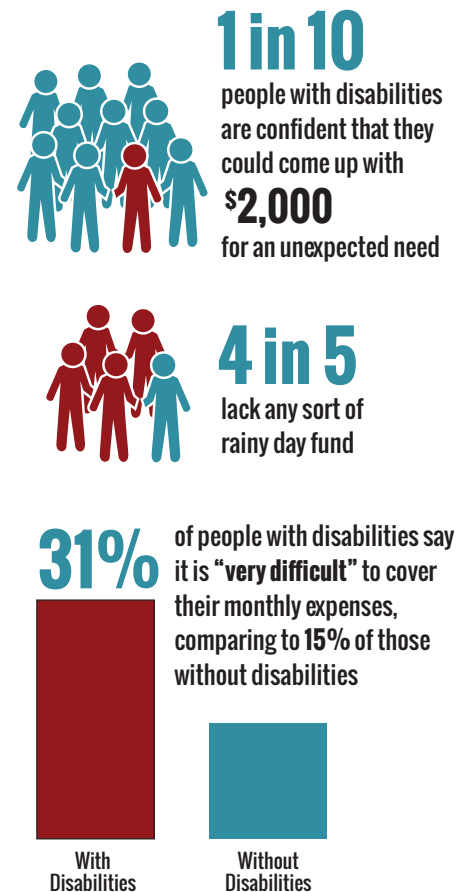
Given the labor force barriers and outcomes described above, it is not surprising that people with disabilities in the U.S. and their families often experience significantly greater economic and material hardship.^{75, 76} One study estimates that a decade after the onset of a chronic and severe disability, a person on average experiences a 76 percent decline in earnings, a 28 percent decline in after-tax income, a 25 percent decline in food and housing consumption, and a 18 percent decline in food consumption.⁷⁷

Due to lower-than-average income, savings, and wealth, people with disabilities and their families also often face greater financial insecurity. Only 1 in 10 people with disabilities are confident that they could come up with \$2,000 for an unexpected need (compared to 1 in 3 people with no disability) and 4 in 5 lack any sort of rainy day fund (compared to just over half of people with no disability).⁷⁸ People with disabilities and their families also often pay higher than average out-of-pocket medical costs and may face added disability-related costs, such as for accessible transportation, adaptive equipment, home modifications, or medically-prescribed diets.⁷⁹ Compared to people without disabilities, adults with disabilities are twice as likely to say that it is “very difficult” to cover their monthly expenses (31 percent versus 15 percent) and half as likely to say that it is “not at all difficult” (20 percent versus 41 percent).⁸⁰ Twenty-two percent of families raising a child with special health care needs report that the child’s health conditions have led to family financial problems.⁸¹

The combination of lower incomes and higher costs can threaten basic living standards. Families with a child with a disability are more likely to report that it has been very hard to get by on the family’s income and cover “the basics like food or housing.”⁸² Thirteen percent of families whose children have “more complex health care needs” report that this happens “very often,” compared to 6 percent of families that do not include a minor child with special health care needs.⁸³

As a result, PFML can play an important role in reducing poverty and mitigating the potential for discrimination and exclusion from the workforce.^{84, 85} As noted earlier, paid leave can reduce job separations and involuntary time out of the workforce. It allows families to plan, adjust their spending, and avoid premature depletion of savings.⁸⁶ It can also positively affect wages. Though this research is not focused on people with disabilities per se, Rutgers researchers found that women with children who took paid family leave for 30 or more days following a child’s birth were 54 percent more likely to report wage increases in the year following than women who took no leave.⁸⁷

FIGURE 5. The Finances of People with Disabilities



Source: Graphic created by Georgetown Center on Poverty and Inequality. Data from Conroy, Nicole E., et al. “Financial Capability of Adults with Disabilities: Findings from the FINRA Investor Education Foundation 2012 National Financial Capability Study.” Syracuse University and National Disability Institute, 22 July 2014.

Paid Leave Helps Workers with Disabilities Care for Themselves

Workers with disabilities take leave for the same reasons as all other workers. In the United States, addressing one's own illness is the most common reason that workers take unpaid leave, making up 55 percent of all leave taken; other reasons include a new child (20 percent) and a family member's health condition (18 percent).⁸⁸

As described above, workers with disabilities are more likely to be employed in low-wage, part-time jobs. On average, such jobs provide fewer supports than higher-wage, full-time jobs if a worker experiences a serious medical condition or has family caregiving responsibilities. For example, access to leave of any type, whether paid or unpaid, is less common in low-wage and part-time jobs.⁸⁹ In addition, only 28 percent of workers with disabilities report having "flexible schedules," or jobs that allow flexible start and end times, working at home, and/or taking more breaks.⁹⁰ Flexible schedules, along with other forms of workplace flexibility, can be an important strategy to help people with disabilities to obtain and maintain employment.⁹¹

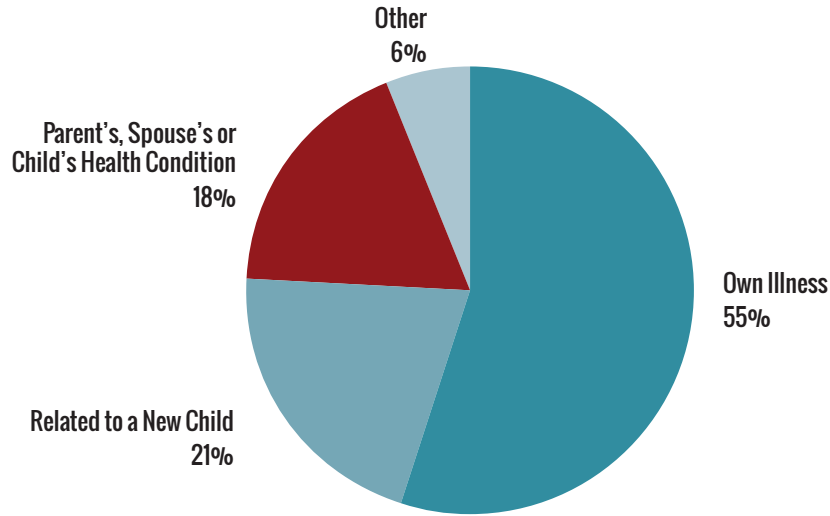
Paid leave increases opportunities for workers, including workers with disabilities, to take time off if they experience a serious medical condition without seeing a sharp drop in income or putting their job or employer-based health insurance at risk. This can include leave for both one-time and ongoing health needs. In a 2012 survey, 46 percent of workers who took leave for their own illness did so for a one-time illness, while 38 percent took leave to address ongoing health issues, or for injuries or illnesses that required routine medical care.⁹² Unsurprisingly, income stability, employment, and ongoing access to health insurance all have a well-documented association with positive health outcomes.^{93, 94, 95} In addition, paid leave can increase access to preventive care, such as going to doctor's appointments, and lead to better overall health and well-being.⁹⁶

Paid Leave Helps Workers Care for Family Members with Disabilities

Caregiving needs in the U.S. are both prevalent and profound: approximately 2 in 5 adults report caring for an adult or child with significant health issues.⁹⁷ This caregiving is most often unpaid and can impact work.⁹⁸ A recent survey by the National Alliance for Caregiving (NAC) and AARP found that unpaid caregivers for adults spent over 24 hours a week providing care, on average, with 23 percent spending more than 40 hours a week.⁹⁹ In the same study, 60 percent of caregivers for adults reported working in the last 12 months, with 56 percent of those working full time. Roughly 1 in 4 workers report taking leave to provide care for a "seriously ill" family member, and an additional quarter anticipate having to do so in the future.^{100, 101}

FIGURE 6. Almost Three Quarters Take Leave for Own or Family Member's Illness

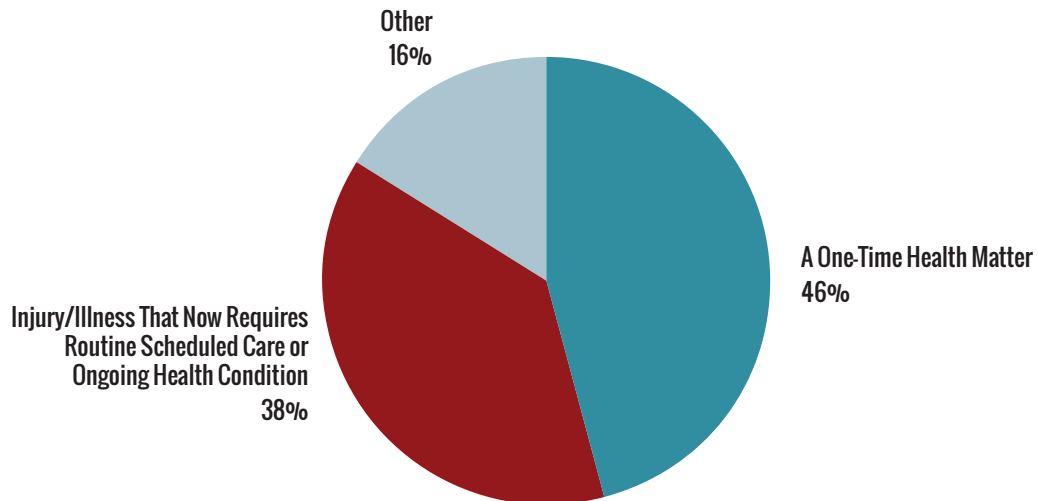
Employees' Medical Reasons for Taking Leave, 2012



Source: The survey did not ask respondents directly about their disability status or leave taken for a disability. Page 71 in Alex Klerman, Jacob, Kelly Daley, and Alyssa Pozniak. "Family and Medical Leave in 2012: Technical Report." Abt Associates, 2012. Available at <http://www.dol.gov/asp/evaluation/fmla/FMLA-2012-Technical-Report.pdf>.

FIGURE 7. A Significant Portion Take Leave for Ongoing Health Condition

Nature of Health Condition Among Those Who Took Leave for Own Illness, 2012



Source: The survey did not ask respondents directly about their disability status or leave taken for a disability. Page 71 in "Alex Klerman, Jacob, Kelly Daley, and Alyssa Pozniak. "Family and Medical Leave in 2012: Technical Report." Abt Associates, 2012. Available at <http://www.dol.gov/asp/evaluation/fmla/FMLA-2012-Technical-Report.pdf>.

The lack of a nationwide caregiving infrastructure—for children, adults, and seniors—fosters these high levels of unpaid caregiving and can lead to difficult trade-offs for people attempting to both work and ensure proper support for themselves and/or family members with disabilities.¹⁰² Affordable and quality professional direct support is largely out of reach in the private market for all but the wealthiest families.¹⁰³ For some children, adults, and seniors with disabilities, Medicaid home and community-based services (HCBS) help bridge the gap. Medicaid HCBS programs provide access to personal care services and related long-term supports and services for nearly 3 million people across the U.S.¹⁰⁴ However, significant unmet needs remain. For example, all states restrict eligibility, cap enrollment, and/or ration the kinds and amounts of services people can access; over 640,000 people were on waiting lists for HCBS services in 2015.¹⁰⁵

Faced with these gaps, workers and families often resort to work-arounds to access and/or provide supports for themselves or for immediate family members such as spouses, children, and parents.¹⁰⁶ In addition to help with activities such as bathing, dressing, eating, toileting, transportation, grocery shopping, and housework, many spend significant time navigating service systems and coping with emergencies. For example, parents of children with significant disabilities often must balance work with taking their child to medical and speech, language, or physical therapy appointments; attending school meetings; meeting their child's daily needs; emergency room visits; and hospitalizations.¹⁰⁷

To meet these often-significant needs, in the NAC/AARP survey, 24 percent of caregivers of adults age 18 or older reported that they reduced their work hours, took a less demanding job, gave up work entirely, or retired early. Similarly, in a 2009/2010 survey, 25 percent of children with special health care needs had a family member who cut back hours worked or stopped working entirely.¹⁰⁸

PFML can help workers navigate their family's needs and help more family members maintain work hours, stay in the workforce, keep careers on track, and address their own health needs. One study found that the odds of a worker losing income increase by 48 percent if the worker lives with a child with special health care needs and by 29 percent if the workers is caring for an adult with health issues—but that having access to dedicated paid family leave reduces the odds of losing income by 30 percent. By stabilizing income and access to health insurance, paid leave helps people with disabilities and their families pay for housing, food, and other basics, access medical care and long-term services and supports, and maintain a life in the community. Other considerations include the often-increased need for PFML after the birth of an infant with special health care needs, both to care for the newborn and for the birth mother to recover. The impact on parents' employment, time, and finances of caring for children¹⁰⁹ or elderly family members with disabilities has also been well-documented.¹¹⁰

Paid leave is particularly important for mitigating the compounded challenges often experienced by unpaid caregivers. First, many family caregivers are women, and women are disproportionately low-income and overrepresented in jobs which are least likely to have access to any kind of leave.¹¹¹ Second, there is an increased likelihood that the person for whom they are providing support lives in poverty.¹¹² Having PFML can help offset some of the expenses associated with providing care and/or taking time off work to do so. Third, caregivers may themselves experience disability, illness, or injury. For example, caregivers providing more hours of care or supporting individuals with more complex health needs are also less likely to report excellent or very good health,^{113, 114} and more likely to indicate that caregiving has made their health worse.¹¹⁵ Access to PFML can help workers balance their personal care needs while working and providing support to a family member. Paid family leave has been shown to boost mental health, and paid sick leave to boost mental and physical health, for workers living with a child or caring for an adult with a chronic illness, medical condition, disability, or other health problem.¹¹⁶

Paid Leave Improves Family Well-Being

In addition to providing vital workplace support for families with disability-related needs, paid leave can also have a profound impact at home. By empowering families with the flexibility and resources to make decisions based on what is best for the individual and family, research suggests that paid leave may even help mitigate the impacts of gender and race on family-work expectations and arrangements.¹¹⁷ Despite an increase in household female work participation rates,¹¹⁸ women are still more likely to be primary the child caregivers. Sixty-six percent of women in dual-earner couples report taking greater responsibility for routine child care than their male partners.¹¹⁹ Seventy percent of women also report taking time off from work because of children's needs, in comparison to only 30 percent of men.¹²⁰ Providing universal paid leave may foster a more egalitarian family environment in which adult male household members can take on more child care and household responsibilities, due to both an increase in access to job-protected time off and societal shifts due to changing norms and expectations in the workplace. Women of color, who disproportionately lack access to paid leave, may especially benefit from the increased access to paid leave.¹²¹

Paid leave can also have a positive impact on family well-being. One study of parents with PFML found the majority (57 percent) experienced positive effects from having leave on both their own emotional health as well as the physical and emotional health of their child (81 percent and 85 percent).¹²²



The State of Paid Leave for People with Disabilities in the United States

A substantial proportion of American workers lack access to one or more types of paid leave through their employers, and those who need it the most are the least likely to have it.¹²³ This is particularly true for workers with disabilities or family members of people with disabilities, who are disproportionately less likely to have access to paid family and medical leave and are more likely to face barriers due to confounding factors related to income, gender, race/ethnicity, and age, among others.¹²⁴ The following section outlines existing and proposed federal and state/local family and medical leave policies in the U.S. It also highlights opportunities to strengthen existing and proposed policies to better meet the needs of people with disabilities and their families.

Key Policies

The U.S. has a patchwork of state and local laws, along with federal disability protections and unpaid family and medical leave.

FEDERAL LAW

More than half of workers in the U.S. have access to job-protected, *unpaid* family and medical leave through the 1993 **Family and Medical Leave Act (FMLA)**.¹²⁵ The FMLA requires employers¹²⁶ to provide eligible workers with job-protected, unpaid leave for up to 12 work weeks within a 12-month period.^{127, 128} FMLA covers “a limited set of family caregiving needs,”¹²⁹ including: the birth or placement for adoption or foster care of a child; caring for a spouse, child, or parent with a serious health condition; and serious health conditions that render an employee “unable to perform the essential functions of his or her job.”¹³⁰ More recently added provisions also provide leave for caregiving associated with military service and deployment.¹³¹ For workers with disabilities, the Americans with Disabilities Act (ADA) offers additional legal support for job-protected leave.^{132, 133} However, there is no national legal requirement for employers to provide any paid leave.¹³⁴

Workers are eligible for FMLA leave if they meet the following conditions: 1) have worked for their employer for at least 12 months;¹³⁵ 2) have worked at least 1,250 hours within the past 12 months for their employer; and 3) are employed at a worksite with at least 50 employees in a 75-mile radius.

In all, an estimated 60 percent of workers are eligible under these requirements.¹³⁶ Employees of small businesses; new workers who have been at their employers for less than 12 months; and employees who are seasonal, part-year, or in some cases, part-time are excluded.¹³⁷ Certain workers, including workers of color, workers with disabilities, and women workers are disproportionately ineligible for FMLA.¹³⁸ Low-wage workers are also less likely to be eligible for FMLA leave—let alone paid leave—than high-wage workers. This can be “for a variety of reasons, including lower educational attainment and overrepresentation in jobs with higher turnover, seasonality, and less income security.”¹³⁹

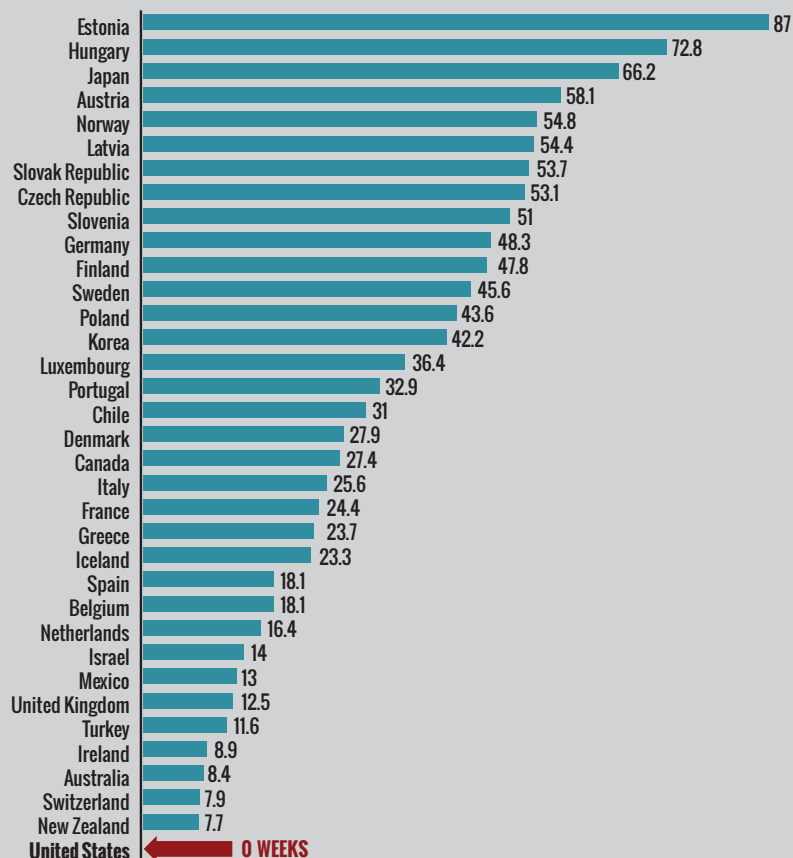
BOX 3

INTERNATIONAL COMPARISONS

Family and medical leave protections in the U.S. fall drastically short of what other countries provide to their workers.^{140, 141} A comparison of parental leave policies shows a particularly stark difference. Of all countries in the Organisation for Economic Co-operation and Development (OECD), the U.S. only provides protected unpaid leave of 12 weeks.¹⁴² In a recent United Nations study, the U.S. is one of just two countries out of the 170 countries with no law providing mothers with paid family leave after the birth of a child.¹⁴³ Estonia provides 87 weeks of paid parental leave, and our neighbors Canada and Mexico provide 27.4 weeks and 13 weeks, respectively.¹⁴⁴

FIGURE 8. The U.S. is the Only OECD Country that Does not Mandate Any Parental Leave

Total Weeks of Paid Parental Leave in OECD Countries, 2016



Notes: Includes paid maternity leave, paternity leave and parental entitlements in place as of April 2016. Estimates based on “full-rate equivalent,” calculated as total number of weeks of any paid parental leave multiplied by average rate of earnings reimbursement for those weeks.

Source: OECD Family Database, 2017. Available at https://www.oecd.org/els/soc/PF2_1_Parental_leave_systems.pdf.

STATE AND LOCAL LAWS

In the absence of a national PFML program, several states and localities have stepped up to fill the gaps. In some cases, states allow eligible workers to combine unpaid leave with state-provided temporary disability insurance benefits to create something similar to paid leave.^{145, 146} California,¹⁴⁷ New Jersey, and Rhode Island were the first to implement their policies,¹⁴⁸ and many others are following suit. New York, the District of Columbia, and most recently Washington¹⁴⁹ will begin offering paid family and medical leave in 2018 (NY) and in 2020 (D.C. and WA). While states like California, New Jersey, Rhode Island and New York were able to build paid family leave programs on top of pre-existing Temporary Disability Insurance (TDI), the District of Columbia and Washington have had to establish new funding mechanisms.¹⁵⁰ Many more localities, including Philadelphia, Pittsburgh, Minneapolis, Chicago, and Seattle have enacted different variations of paid sick days laws in recent years,¹⁵¹ allowing employees to accrue paid sick days for a certain amount of hours worked.¹⁵²

People with Disabilities and their Family Caregivers Are Ill-Served by Current Leave Policies

Paid family and medical leave in the U.S. can foster a functioning, healthy economy and offer an important work support for everyone. In the absence of a comprehensive federal program, many Americans are left out by the existing patchwork of leave systems, and across the workforce access is both unequal and inadequate.¹⁵³ Outside the states leading the way with their own programs, paid leave policy remains largely at the discretion of employers. Depending on the location, industry sector, and individual employers, access to paid leave can be particularly limited for marginalized communities, including individuals with disabilities and people who are low-income;¹⁵⁴ women; young people;¹⁵⁵ lesbian, gay, bisexual, transgender, and queer (LGBTQ); and/or people of color. Examining how people use and do not use paid leave can reveal gaps in the current system—particularly when disability is a factor.

ACCESS TO PAID LEAVE IS LIMITED, ESPECIALLY FOR FAMILIES THAT INCLUDE PEOPLE WITH DISABILITIES

Across the nation, outside of states that have implemented their own paid leave programs, workers have drastically different access to paid leave.¹⁵⁶ Within the overall workforce, just 1 in 7 workers has employer-provided paid *family* leave.¹⁵⁷ Slightly more than 2 in 3 workers have employer-provided sick days, and less than 2 in 5 workers have employer-provided paid *medical* leave through short-term disability benefits.^{158, 159, 160} Such “gaps in access to leave and barriers to use it reflect and can amplify underlying workplace inequality.”¹⁶¹

People who work full-time, at large companies,¹⁶² and/or “in professional and technical occupations and industries [or] high-paying occupations”¹⁶³ are the most likely to have paid leave through their employer.¹⁶⁴ Any worker who falls outside one of these categories or who has additional barriers to employment¹⁶⁵ is significantly less likely to have access to paid leave, including for family or medical care. For example, over two-thirds of all part-time workers in the private sector lack access to even one paid sick day.¹⁶⁶ Inequities are reinforced across the pay scale—a staggering 53 percent “of lower-income workers did not receive pay during their most recent FMLA leave.”¹⁶⁷

As described in earlier sections, people with disabilities are more likely to work in part-time and low-wage jobs, and as a result are less likely to have access to paid leave.^{168, 169, 170} These gaps often persist in states that have established their own PFML programs, because current FMLA and state regulations exclude many workers in part-time and low-wage jobs.¹⁷¹

Examining paid leave at the intersections of disability, race/ethnicity, sexual orientation, and gender, among others, reveals additional stark discrepancies. Despite having “better educational credentials than ever,” women—including women with disabilities—are still overrepresented in low-wage work and continue to shoulder a disproportionate amount of household and caregiving responsibilities.¹⁷² For women of color, the likelihood of having access to any kind of paid leave is quite low, as they are overrepresented in the types of jobs (lower-wage, part-time) that typically do not provide such leave.^{173, 174} In addition, roughly half of Hispanic/Latina women workers lack access to any paid sick leave.¹⁷⁵

Many workers and families find FMLA protections to be too narrow and not encompassing of the relationships and structures that are important to different families.¹⁷⁶ For example, a vast majority of households (over 80 percent) do not fit the “traditional” nuclear family model (a married couple and their minor children). As of 2014, 85 million people—disproportionately people of color—lived in extended families.¹⁷⁷ And yet, under the FMLA, family is defined as “a child who is under 18 years of age or has a disability, a spouse, or a parent.”¹⁷⁸ Due to efforts by disability advocates, the Department of Labor (DOL) has clarified that siblings, grandparents, and other relatives can qualify in some circumstances for FMLA leave when acting “in loco parentis” (described in DOL subregulatory guidance as “to take on the role of a parent”).^{179, 180} While a significant step, this still categorically excludes anyone who relies on extended or chosen family members, including many LGBTQ individuals.¹⁸¹ A forthcoming brief by the Center for American Progress estimates that nearly one-third of people in the U.S. report having taken time off from work to care for a chosen family member with a health issue, with LGBTQ people and individuals with disabilities being especially likely to need to take leave to support chosen family.¹⁸² Similarly, the recent increased focus on natural supports and circles of supports for people with disabilities has resulted in a growing number of non-related individuals who would benefit from inclusion in paid leave, such as shared living roommates.

FMLA protections can also fall short of covering many of a family’s needs, whether for a worker’s own medical needs or for caregiving. For example, DOL has clarified that workers can use unpaid FMLA leave in certain circumstances when acting “in loco parentis” for a sibling, but gaps remain.¹⁸³ Similarly, the FMLA does not address leave to attend school meetings for children with disabilities under the Individuals with Disabilities Education Act or Section 504 of the Rehabilitation Act.^{184, 185}

EVEN WHEN AVAILABLE, PAID LEAVE IS OFTEN OUT OF REACH

Of those with job-protected coverage under the FMLA who did not take time off after a qualifying event, 8 in 10 reported they would have taken leave if it were paid.¹⁸⁶ But even when workers do have access to PFML—through their employer or state family leave insurance—many do not use it.^{187, 188} Take-up may be influenced by a number of factors including leave duration and frequency, wage replacement, job protections, and awareness.

As noted earlier, workers with disabilities and their families on average have lower incomes and savings, as well as increased out of pocket medical and disability-related costs. If paid leave benefits do not replace a sufficient percentage of wages, workers who have disabilities or who are caring for a family member with a disability may not be able to afford to take leave.¹⁸⁹ In addition, faced with ongoing negative attitudes and discrimination in the workplace (as discussed above), workers with disabilities may have significant privacy concerns or may fear retaliation if they take leave. If paid leave benefits do not come with assurances such as continued health insurance, job restoration and protection against retaliation, fear of negative repercussions may pose a significant deterrent for workers with disabilities to taking leave.

For example, recent studies of workers in California and New Jersey¹⁹⁰ (which have paid leave programs) found that limited public awareness, insufficient replacement rates, and gaps in leave coverage, among other factors, may limit take-up rates. In those states, “low-wage workers, immigrants, and Latinos—groups that overlap significantly—were least likely to be aware of the program.”¹⁹¹ In addition, depending on state of residence and whether they are covered by FMLA, workers may or may not have *job-protected* paid leave. The studies of workers in California and New Jersey found that some did not take paid leave, even when they had the option, because they were afraid of losing their jobs.¹⁹² Pairing PFML with adequate job security measures may be particularly important for people with disabilities, as they are more likely to experience discrimination in the workforce, as well as workers providing support to family members with disabilities, who may fear adverse consequences from taking time off from work.

Such findings suggest a well-functioning PFML policy requires public outreach and buy-in on the part of the employer; importantly, public outreach and education must be fully accessible to people with disabilities. In addition, a well-functioning PFML policy needs to include features that address workers’ concerns for economic and job security. Another important takeaway is that absent a national, comprehensive PFML policy, efforts by states and localities—while an important step forward—may have modest impact for workers with disabilities and their families.



Conclusion and Policy Recommendations

Workers with disabilities and their family members need a range of supports to ensure fair outcomes at work while addressing their family and serious health needs. These supports include programs like Medicaid, Medicare, health insurance subsidies, vocational rehabilitation and job training, Social Security and Supplemental Security Income, Unemployment Insurance, Section 8 and related housing assistance programs, and the Supplemental Nutrition Assistance Program. Labor standards, employment and civil rights protections, and other measures are also core to a robust agenda of economic inclusion for people with disabilities and their families. Together, these and related federal and state programs and policies empower people with disabilities to lead independent lives and to contribute and participate fully in their communities and the economy.¹⁹³ Paid leave is an important complement to these policies, but is virtually unavailable to most households with disabilities.

Comprehensive PFML enables workers with disabilities and workers caring for a family member with a disability to stay connected to the workforce and balance competing personal, financial, and job responsibilities. By ensuring job security and promoting care and medical treatment, paid leave can help mitigate some of the disadvantages faced by workers with disabilities, working family caregivers, and their families. Beyond the scope of this paper, paid leave can also be an important tool in supporting the recruitment, retention, health, and economic well-being of direct support professionals who often play a central role in the lives of people with disabilities.¹⁹⁴

In the almost quarter-century since the FMLA was first enacted in 1993, it has become clear that more is needed to support working families—especially when those families are also dealing with serious medical conditions and significant financial burdens. A survey by the National Partnership for Women & Families found that support for paid family and medical leave is widespread.¹⁹⁵ It is also bipartisan,¹⁹⁶ and workers, practitioners, policymakers, and employers¹⁹⁷ are all stepping up to expand access for working families in a variety of ways.^{198, 199} Despite these changes, the 2016 National Study of Employers found that “the average amount of parental and caregiving leave provided by U.S. employers has not changed significantly since 2012.”²⁰⁰ And even though access to paid sick days has recently increased,²⁰¹ further legislative efforts at all levels of government remain essential to widen access to PFML for workers and their families.²⁰²

Needs related to a new child, one’s own health, or the health of a family member manifest in many forms and situations—only some of which are covered under the limited patchwork of existing federal and state laws governing paid and unpaid leave. To more fully address the needs of people with disabilities and their families, paid leave should reflect these realities in a number of ways:

- Allow an expanded set of family members (including family of choice) to qualify;
- Cover workers at employers of all sizes, including smaller employers and workers who are self-employed;
- Allow qualification based on a reasonable part-time work history;
- Define qualifying events to be inclusive of the full range of potential parental, medical, and caregiving needs of people with disabilities;
- Establish progressive replacement rates that near 100 percent for low-wage workers;
- Ensure continuation of health coverage during the period of leave;
- Permit intermittent use of leave to allow for periodic medically-required attention and rest;
- Permit sufficiently lengthy leave to promote positive outcomes for people with disabilities and caregivers of people with disabilities;
- Provide for job protection and be available without adverse employment consequences; and
- Include robust public outreach and education that is fully accessible to and inclusive of people with disabilities.

The U.S. has a long way to go before all workers and their families, regardless of what types of jobs they have, can access universal, equitable, and adequate paid leave. However, the positive momentum and widespread support behind paid leave is clear. Creating a comprehensive national paid leave policy that can support the employment and economic security of workers with disabilities and their families, and more broadly, their communities, may have far reaching benefits. For example, it may help mitigate gender and race inequities in family-work expectations and arrangements. And by improving labor market outcomes²⁰³ and business productivity,²⁰⁴ comprehensive paid leave can increase economic growth. As a result, a comprehensive paid leave policy designed with people with disabilities and caregivers in mind would help advance national goals ranging from growing economic prosperity and achieving equity, to strengthening families and expanding freedom for workers and their families.

Appendix

All estimates, unless otherwise noted, are based on Georgetown Center on Poverty and Inequality (GCPI) analysis using a five-year pool of American Community Survey (ACS) data (2011-2015) and define an individual as having a disability if they meet at least one of the following criteria: having a U.S. Department of Veterans Affairs service-connected disability rating greater than zero; reporting cognitive difficulty, ambulatory difficulty, independent living difficulty, self-care difficulty, vision difficulty, or hearing difficulty; or receiving Social Security or Supplemental Security Income while under the age of 65.

EXHIBIT 1. People with disabilities in the United States, 2015

	U.S. POPULATION		CHILDREN (5-17 YEARS OLD)	WORKING AGE ADULTS (18-64 YEARS OLD)	SENIORS (65+ YEARS OLD)
	Number of individuals with disabilities	Percentage of population that have disabilities	Number of children with disabilities	Number of working age adults with disabilities	Number of seniors with disabilities
OVERALL	47,100,000	15.9%	3,700,000	26,300,000	17,400,000
BY GENDER					
Male	23,500,000	16.1%	2,200,000	13,700,000	7,700,000
Female	23,600,000	15.6%	1,500,000	12,600,000	9,700,000
BY RACE/ETHNICITY					
African American	7,000,000	19.4%	700,000	4,700,000	1,200,000
American Indian and Alaska Native	400,000	22.1%	40,000	300,000	100,000
Asian American and Pacific Islander	1,300,000	8.4%	90,000	700,000	600,000
Hispanic/Latino	5,500,000	11.2%	800,000	3,000,000	1,400,000
White	31,800,000	17.0%	2,000,000	16,600,000	13,400,000
Mixed	1,000,000	16.0%	200,000	700,000	200,000
BY AGE GROUP					
Ages 5-10	1,200,000	4.9%	1,200,000	X	X
Ages 11-17	2,100,000	7.2%	2,100,000	X	X
Ages 18-24	2,300,000	7.1%	X	2,300,000	X
Ages 25-34	3,500,000	7.9%	X	3,500,000	X
Ages 35-44	4,200,000	10.0%	X	4,200,000	X
Ages 45-54	7,100,000	15.8%	X	7,100,000	X
Ages 55-64	9,200,000	23.1%	X	9,300,000	X
Ages 65-74	7,000,000	27.7%	X	X	7,000,000
Ages 75+	10,400,000	53.0%	X	X	10,400,000

Source: Authors' calculations using the American Community Survey five-year sample (2011-2015).

EXHIBIT 2. Employment and labor force outcomes for working-age adults with disabilities, Between ages 18 and 64, 2015

	WORKING-AGE ADULTS WITH A DISABILITY				WORKING-AGE ADULTS WITHOUT A DISABILITY			
	Labor force participation rate	Unemployment rate	Percent of labor force participants that work full-time	Percent of labor force participants that work part-time	Labor force participation rate	Unemployment rate	Percent of labor force participants that work full-time	Percent of labor force participants that work part-time
OVERALL	39.9%	16.2%	52.7%	37.9%	81.3%	7.2%	67.5%	28.9%
BY GENDER								
Male	43.2%	16.7%	57.6%	33.4%	86.4%	8.4%	73.2%	23.5%
Female	36.4%	17.4%	46.4%	43.7%	76.2%	6.9%	61.4%	35.0%
BY RACE/ETHNICITY								
African American	34.1%	25.0%	46.5%	37.2%	73.2%	13.6%	62.6%	30.0%
American Indian and Alaska Native	34.4%	22.0%	48.4%	38.1%	76.3%	12.5%	60.9%	32.3%
Asian American and Pacific Islander	44.1%	13.0%	55.6%	35.8%	79.1%	6.2%	69.2%	27.2%
Hispanic/Latino	41.2%	14.3%	50.9%	39.2%	79.7%	8.9%	64.2%	31.4%
White	41.2%	14.7%	54.7%	37.7%	82.7%	6.0%	69.5%	28.0%
Mixed	41.3%	20.0%	45.2%	42.9%	85.0%	12.0%	59.8%	35.5%
BY AGE GROUP								
Ages 18-24	45.9%	30.0%	20.8%	62.6%	69.0%	14.9%	33.6%	59.2%
Ages 25-34	50.3%	22.2%	46.8%	41.9%	84.9%	7.8%	69.1%	27.3%
Ages 35-44	46.6%	15.0%	55.1%	35.2%	86.5%	6.0%	74.9%	22.3%
Ages 45-54	41.0%	13.8%	59.0%	32.6%	87.7%	5.6%	76.1%	21.3%
Ages 55-64	30.7%	10.7%	59.9%	33.6%	74.5%	4.9%	73.0%	24.5%

Source: Authors' calculations using the American Community Survey (ACS) five-year sample (2011-2015). Our unemployment calculations may yield higher numbers than the Bureau of Labor Statistics (BLS) official unemployment numbers due to rounding errors and because the BLS bases their rates on the Current Population Survey (CPS), rather than the ACS, which we use. The ACS may have higher unemployment numbers than the CPS by 25-30 percent.

EXHIBIT 3. Poverty and near poverty rates by disability status, 2015

	INDIVIDUALS WITH DISABILITIES			INDIVIDUALS WITHOUT DISABILITIES		
	At or below the Official Poverty Measure (OPM)	At or below 150% of the OPM	At or below 200% of the OPM	At or below the Official Poverty Measure (OPM)	At or below 150% of the OPM	At or below 200% of the OPM
OVERALL	26.3%	39.2%	50.0%	15.5%	23.9%	32.6%
BY GENDER						
Male	23.9%	35.7%	45.8%	14.9%	22.8%	31.3%
Female	28.7%	42.8%	53.9%	16.1%	25.0%	33.8%
BY RACE/ETHNICITY						
African American	39.2%	54.2%	64.6%	26.8%	38.1%	48.5%
American Indian and Alaska Native	36.8%	51.9%	63.0%	28.2%	40.3%	51.1%
Asian American and Pacific Islander	22.1%	33.6%	42.7%	13.9%	21.2%	28.7%
Hispanic/Latino	33.2%	49.3%	61.5%	24.1%	38.8%	51.7%
White	22.1%	34.0%	44.5%	10.9%	17.0%	24.2%
Mixed	32.7%	46.3%	56.5%	19.6%	28.5%	37.3%
BY AGE GROUP						
Ages 5-10	38.3%	52.6%	63.1%	23.2%	35.2%	45.6%
Ages 11-17	30.9%	44.9%	56.0%	19.9%	30.7%	40.6%
Ages 18-24	37.6%	50.1%	60.3%	32.5%	42.5%	52.0%
Ages 25-34	34.8%	47.0%	56.9%	16.2%	25.2%	34.8%
Ages 35-44	33.9%	47.0%	56.7%	12.3%	20.1%	28.5%
Ages 45-54	31.1%	44.0%	53.7%	8.7%	14.3%	21.0%
Ages 55-64	24.5%	37.2%	47.3%	7.5%	12.5%	18.5%
Ages 65-74	16.2%	28.3%	39.1%	7.0%	14.3%	22.4%
Ages 75+	20.8%	34.3%	46.7%	9.3%	20.7%	32.9%
BY EDUCATIONAL ATTAINMENT						
Less than High School	37.4%	54.2%	66.1%	23.7%	36.4%	47.5%
High School	26.0%	39.4%	50.9%	16.5%	26.0%	36.4%
Bachelor of Arts+	18.0%	27.2%	35.7%	9.7%	14.7%	30.6%

Source: Authors' calculations using the American Community Survey five-year sample (2011-2015).

EXHIBIT 4. Median personal income for working-age adults, Between ages 18 and 64, 2015

	INDIVIDUALS WITH DISABILITIES	INDIVIDUALS WITHOUT DISABILITIES
OVERALL	\$12,100	\$26,000
BY GENDER:		
Male	\$14,400	\$35,000
Female	\$10,500	\$20,400
BY RACE/ETHNICITY:		
African American	\$9,800	\$20,000
American Indian and Alaska Native	\$10,000	\$16,800
Asian American and Pacific Islander	\$10,900	\$25,400
Hispanic/Latino	\$10,100	\$18,000
White	\$13,600	\$31,600
Mixed	\$10,700	\$20,600
BY AGE GROUP:		
Ages 18-24	\$6,100	\$5,200
Ages 25-34	\$10,100	\$25,800
Ages 35-44	\$12,000	\$35,000
Ages 45-54	\$12,400	\$37,700
Ages 55-64	\$15,000	\$35,600
BY EDUCATIONAL ATTAINMENT:		
Less than High School	\$8,700	\$11,000
High School	\$11,000	\$20,300
Bachelor of Arts+	\$20,100	\$36,200

Source: Authors' calculations using the American Community Survey five-year sample (2011-2015).

EXHIBIT 5. Economic outcomes for working-age potential caregivers,* Between ages 18 and 64, 2015

	WORKING-AGE ADULTS WITH ADDITIONAL HOUSEHOLD MEMBERS WITH DISABILITIES	WORKING-AGE ADULTS WITH NO ADDITIONAL HOUSEHOLD MEMBERS WITH DISABILITIES
TOTAL	36,000,000	163,000,000
Labor force participation rate	68.0%	77.5%
Unemployment rate	13.0%	7.1%
Percent of labor force participants that work full-time	57.1%	68.2%
Percent of labor force participants that work part-time	35.1%	28.5%
Median personal income (annual)	\$15,500	\$25,800
Percent living in or near poverty		
At or below the Official Poverty Measure (OPM)	18.1%	16.8%
At or below 150% of the OPM	30.0%	24.2%
At or below 200% of the OPM	40.4%	31.8%

*If a working-age adult of any disability status lives in a household with one or more additional members with disabilities, they are characterized as a potential caregiver and included in this table.

Source: Authors' calculations using the American Community Survey five-year sample (2011-2015).

EXHIBIT 6. Household economic characteristics, 2015

	HOUSEHOLDS WITH AT LEAST ONE PERSON WITH A DISABILITY					HOUSEHOLDS WITH NO ONE WITH A DISABILITY
	Overall	Households with one or more children with a disability (5-17 years old)	Households with one or more working age adults with a disability (18-64 years old)	Households with one or more seniors with a disability (65+ years old)	Households where the household head has a disability	
Total number of households	33,700,000	3,100,000	19,900,000	13,700,000	23,300,000	83,200,000
Percent of households	28.8%	8.2% (of households with children)	20.7% (of households with working age adults)	43.9% (of households with seniors)	19.9%	71.1%
Median income	\$51,600	\$50,100	\$51,600	\$51,000	\$39,600	\$70,500
Percent living in or near poverty						
At or below the Official Poverty Measure (OPM)	23.1%	35.4%	31.1%	17.7%	27.5%	18.4%
At or below 150% of the OPM	35.0%	48.8%	42.3%	29.4%	40.8%	26.6%
At or below 200% of the OPM	46.0%	59.5%	52.6%	40.6%	51.4%	34.8%

*If a household includes one or more members with disabilities, it is characterized as a caregiving household and included in this table.

Source: Authors' calculations using the American Community Survey five-year sample (2011-2015).

Endnotes

- 1 Brault, Matthew W. "Americans With Disabilities: 2010." U.S. Census Bureau, July 2012. Available at <https://www.census.gov/prod/2012pubs/p70-131.pdf>. See also Carlson, Steven, Brynne Keith-Jennings, and Raheem Chaudhry. "SNAP Provides Needed Food Assistance to Millions of People with Disabilities." Center on Budget and Policy Priorities, June 2017. Available at <http://www.cbpp.org/research/food-assistance/snap-provides-needed-food-assistance-to-millions-of-people-with->
- 2 See Footnote 5 in Carlson, Steven, Brynne Keith-Jennings, and Raheem Chaudhry. "SNAP Provides Needed Food Assistance to Millions of People with Disabilities." Center on Budget and Policy Priorities, June 2017. Available at https://www.cbpp.org/research/food-assistance/snap-provides-needed-food-assistance-to-millions-of-people-with#_ftn5.
- 3 All estimates, unless otherwise noted, are based on Georgetown Center on Poverty and Inequality (GCIPI) analysis using a five-year pool of American Community Survey (ACS) data (2011-2015) and define an individual as having a disability if they meet at least one of the following criteria: having a U.S. Department of Veterans Affairs service-connected disability rating greater than zero; reporting cognitive difficulty, ambulatory difficulty, independent living difficulty, self-care difficulty, vision difficulty, or hearing difficulty; or receiving Social Security or Supplemental Security Income while under the age of 65. Due to limitations of the ACS, disability status information is only available for ages five and up. All ACS public use microdata was extracted from Ruggles, Steven, et al. "Integrated Public Use Microdata Series: Version 5.0 [Machine-readable database]." USA IPUMS, Minnesota Population Center [producer and distributor], 2010.
- 4 "Help Wanted? Providing and Paying for Long-Term Care" OECD, 2011. Available at <http://www.oecd.org/els/health-systems/47884543.pdf>.
- 5 Chari, Amalavoyal, et al. "The Opportunity Costs of Informal Elder-Care in the United States: New Estimates from the American Time Use Survey." Health Services Research, 50(3):871-882, June 2015. Available at <https://www.ncbi.nlm.nih.gov/pmc/articles/PMC4450934/>.
- 6 Graham, David. "How America's Workforce Has Changed Since 1977." The Atlantic, 2 July 2015. Available at <https://www.theatlantic.com/business/archive/2015/07/october-1977-labor-force-participation/397595/>.
- 7 See Box 2 on page 12 for a definition of paid family and medical leave.
- 8 Schuster, Mark A., et al. "Perceived Effects of Leave from Work and the Role of Paid Leave Among Parents of Children with Special Health Care Needs." American Journal of Public Health, 99(4):698-705, April 2009. Available at <https://www.ncbi.nlm.nih.gov/pmc/articles/PMC2661484/>.
- 9 Silverstein, Robert. "Emerging Disability Policy Framework: A Guidepost for Analyzing Public Policy." Iowa Law Review, 85(5):1691-1806, August 2000. Available at http://www.ncwd-youth.info/assets/framework/silverstein_framework.pdf.
- 10 See for example MacGuineas, Maya. "SSDI Solutions Initiative." Committee for a Responsible Federal Budget, 2017. Available at <http://www.crfb.org/project/ssdi-solutions-initiative>.
- 11 Quinton, Sophie. "States Work to Help People With Disabilities Find Work." The Pew Charitable Trusts, September 2015. Available at <http://www.pewtrusts.org/en/research-and-analysis/blogs/stateline/2015/09/17/states-work-to-help-people-with-disabilities-find-work>.
- 12 Stroman, Trish, et al. "Why Paid Family Leave Is Good Business." Boston Consulting Group, 7 February 2017. Available at <https://www.bcgperspectives.com/content/articles/human-resources-people-organization-why-paid-family-leave-is-good-business/>.
- 13 Research "suggests that expanding paid leave is likely to have economy-wide benefits such as reduced government spending on public assistance and increased labor force participation, which would bring concomitant economic gains, generating a larger tax base and increased consumer spending." Gault, Barbara, et al. "Paid Parental Leave in the United States: What the Data Tell Us About Access, Usage, and Economic and Health Benefits." Institute for Women's Policy Research, March 2014. Available at <https://iwpr.org/wp-content/uploads/wpallimport/files/iwpr-export/publications/B334-Paid%20Parental%20Leave%20in%20the%20United%20States.pdf>.
- 14 Omang, Joanne and Ellen Bravo. "In Their Own Words: Working People and the Need for Policies that Provide Economic Security." The Leadership Conference Education Fund, May 2017. Available at <http://civilrightsdocs.info/pdf/reports/economic-security-2017-web.pdf>.
- 15 Rossin-Slater, Maya. "Maternity and Family Leave Policy: NBER Working Paper No. 23069." The National Bureau of Economic Research, January 2017. Available at <http://www.nber.org/papers/w23069>.
- 16 According to one study, "women who take paid leave after a child's birth report stronger labor force attachment and positive changes in wages in the year following a child's birth, when compared to those who do not take any leave. Both women and men report lower levels of public assistance receipt in the year following a child's birth, when compared to those who do not take any leave." Houser, Linda and Thomas P. Vartanian. "Pay Matters: The Positive Economic Impacts of Paid Family Leave for Families, Businesses and the Public." Center for Women and Work, Rutgers, The State University of New Jersey, January 2012. Available at <http://www.nationalpartnership.org/research-library/work-family/other/pay-matters.pdf>.
- 17 For example, "89 percent to 99 percent of employers in California said that the policy "had no effect or a positive one on productivity, profitability, turnover and morale... Smaller businesses were even less likely to report negative effects. In New Jersey, employers said paid leave had helped reduce stress and improve morale among both workers taking leave and among their co-workers." Milkman, Ruth and Eileen Appelbaum. "Unfinished Business: Paid Family Leave in California and the Future of U.S. Work-Family Policy." Cornell University ILR School, 55-84, 2013. Available at <http://digitalcommons.ilr.cornell.edu/cgi/viewcontent.cgi?article=1090&context=books>.
- 18 Impacts on employers may vary depending on employer characteristics and program design. Lessons from the extensive experience of programs both in the U.S. and abroad may inform policymakers considering next steps. Forthcoming National Academy of Social Insurance (NASI) report on Paid Family and Medical Leave, September 2017.
- 19 See for example Menasce Horowitz, Juliana, et al. "Americans Widely Support Paid Family and Medical Leave, but Differ Over Specific Policies." Pew Research Center, March 2017. Available at <http://www.pewsocialtrends.org/2017/03/23/americans-widely-support-paid-family-and-medical-leave-but-differ-over-specific-policies/>.
- 20 Weber, Lauren. "Most Americans Support Paid Leave for Workers, Poll Finds." Wall Street Journal, December 2016. Available at <https://www.wsj.com/articles/most-americans-support-paid-leave-for-workers-poll-finds-1481641205>.
- 21 For an analysis of growing employer support, see Stroman, Trish, et al. "Why Paid Family Leave Is Good Business." Boston Consulting Group, 7 February 2017. Available at <https://www.bcgperspectives.com/content/articles/human-resources-people-organization-why-paid-family-leave-is-good-business/>.

- 22 To date, family and medical leave insurance (FMLI) policies for the private sector workforce have only passed at the state level. While more than two dozen municipalities have passed some form of paid leave (mostly parental) for their own workforces, these only cover public sector workers. To date, no locality has passed FMLI for the private sector workforce (though some are exploring it). "Paid Family and Medical Leave: An Issue Whose Time Has Come." AEI-Brookings Working Group on Paid Family Leave, May 2017. Available at https://www.brookings.edu/wp-content/uploads/2017/06/es_20170606_paidfamilyleave.pdf.
- 23 Nearly every OECD country guarantees paid maternity leave for at least three months. The U.S. stands alone in not offering any statutory national entitlement to paid leave. "PF2.1: Key Characteristics of Parental Leave Systems." OECD Family Database, updated 15 March 2017. Available at http://www.oecd.org/els/soc/PF2_1_Parental_leave_systems.pdf.
- 24 "Table 32. Leave Benefits: Access, Civilian Workers, March 2016." U.S. Bureau of Labor Statistics, March 2016. Available at <https://www.bls.gov/ncs/ews/benefits/2016/ownership/civilian/table32a.pdf>.
- 25 Gault, Barbara, et al. "Paid Parental Leave in the United States: What the Data Tell Us About Access, Usage, and Economic and Health Benefits." Institute for Women's Policy Research, March 2014. Available at <https://iwpr.org/wp-content/uploads/wpallimport/files/iwpr-export/publications/B334-Paid%20Parental%20Leave%20in%20the%20United%20States.pdf>.
- 26 In a 2012 worksite survey conducted for the Department of Labor, only 20 percent of work sites offered paid paternity leave to most or all employees, and only 35 percent of work sites that provided paid maternity leave to most or all employees (including fully and partially paid leave). See Exhibit 7.2.1 in Alex Klerman, Jacob, Kelly Daley, and Alyssa Pozniak. "Family and Medical Leave in 2012: Technical Report." Abt Associates, 2012. Available at <http://www.dol.gov/asp/evaluation/fmla/FMLA-2012-Technical-Report.pdf>.
- 27 Taking unpaid time off from work presents a substantial financial burden for workers and their families. According to the Federal Reserve Board's 2015 annual Survey of Household Economics and Decisionmaking, nearly one-third of adults (31 percent, or approximately 76 million) "are either 'struggling to get by' or are 'just getting by.'" The survey also found that nearly half of all U.S. families would be unable to weather a \$400 emergency. "Report on the Economic Well-Being of U.S. Households in 2015." Board of Governors of the Federal Reserve System, May 2016. Available at <https://www.federalreserve.gov/2015-report-economic-well-being-us-households-201605.pdf>.
- 28 Developing a detailed policy proposal is beyond the scope of this report.
- 29 Disability has no agreed-upon definition in the United States. Competing definitions have at their core the existence of a physical, mental, or sensory impairment that limits basic life activities. The Census Bureau estimated that in 2010, 19 percent of the civilian noninstitutionalized population had a disability, defined as a "physical or mental impairment that affects one or more major life activities, such as walking, bathing, dressing, eating, preparing meals, doing errands alone or doing housework." Brault, Matthew. "Americans With Disabilities: 2010." U.S. Census Bureau, July 2012. Available at <https://www.census.gov/library/publications/2012/demo/p70-131.html>.
- 30 For an international definition, see "World Report on Disability." The World Health Organization and World Bank, 2011. Available at http://www.who.int/disabilities/world_report/2011/report.pdf.
- 31 Working-age adults are 18-64 years old. Authors' calculations using the American Community Survey five-year sample (2011-2015).
- 32 Authors' calculations using the American Community Survey five-year sample (2011-2015).
- 33 Vallas, Rebecca and Shawn Fremstad. "A Fair Shot for Workers with Disabilities." Center for American Progress, 28 January 2015. Available at <https://www.americanprogress.org/issues/poverty/reports/2015/01/28/105520/a-fair-shot-for-workers-with-disabilities/>.
- 34 "Thirty-two percent of adults report that their income varies to some degree from month to month, and 43 percent report that their monthly expenses vary to some degree. Forty-two percent of those with volatile incomes or expenses say that they have struggled to pay their bills at times because of this volatility." "Report on the Economic Well-Being of U.S. Households in 2015." Board of Governors of the Federal Reserve System, May 2016. Available at <https://www.federalreserve.gov/2015-report-economic-well-being-us-households-201605.pdf>.
- 35 Vallas, Rebecca and Shawn Fremstad. "A Fair Shot for Workers with Disabilities." Center for American Progress, 28 January 2015. Available at <https://www.americanprogress.org/issues/poverty/reports/2015/01/28/105520/a-fair-shot-for-workers-with-disabilities/>.
- 36 Carlson, Steven, Brynne Keith-Jennings, and Raheem Chaudhry. "SNAP Provides Needed Food Assistance to Millions of People with Disabilities." Center on Budget and Policy Priorities, June 2017. Available at <https://www.cbpp.org/research/food-assistance/snap-provides-needed-food-assistance-to-millions-of-people-with>.
- 37 See, for example, Axelrad, Daniel, et al. "America's Children and the Environment." U.S. Environmental Protection Agency, Third Edition, January 2015. Available at https://www.epa.gov/sites/production/files/2015-06/documents/ace3_2013.pdf. See also Collins, Mary B., Ian Munoz, and Joseph JaJa. "Linking 'Toxic Outliers' to Environmental Justice Communities." Environmental Research Letters, 11(1), 26 January 2016. Available at <http://iopscience.iop.org/article/10.1088/1748-9326/11/1/015004/pdf>.
- 38 Michaels, David. "Adding Inequality to Injury: The Costs of Failing to Protect Workers on the Job." U.S. Department of Labor, Occupational Safety & Health Administration, June 2015. Available at <https://www.dol.gov/osha/report/20150304-inequality.pdf>.
- 39 "OSHA Chief: Inequality in America Is About Workplace Hazards, Too." NBC News, 14 July 2014. Available at <http://www.nbcnews.com/feature/in-plain-sight/osha-chief-inequality-america-about-workplace-hazards-too-n152206>.
- 40 Fremstad, Shawn. "Half in Ten: Why Taking Disability into Account is Essential to Reducing Income Poverty and Expanding Economic Inclusion." Center for Economic and Policy Research, September 2009. Available at <http://cepr.net/documents/publications/poverty-disability-2009-09.pdf>.
- 41 Authors' calculations using the American Community Survey five-year sample (2011-2015).
- 42 2010 Consumer Disability Awareness Survey. Council for Disability Awareness, 2010. Available at: <http://www.disabilitycanhappen.org/research/consumer/default.asp>
- 43 Ibid.
- 44 Authors' calculations using the American Community Survey five-year sample (2011-2015).
- 45 Authors' calculations using the American Community Survey (ACS) five-year sample (2011-2015). Our unemployment calculations may yield higher numbers than the Bureau of Labor Statistics (BLS) official unemployment numbers due to rounding errors and because the BLS bases their rates on the Current Population Survey (CPS), rather than the ACS, which we use. The ACS may have higher unemployment numbers than the CPS by 25-30 percent.
- 46 Oberoi, Ashmeet Kaur, et al. "Employment and Outcomes among African American and White Woman with Disabilities: Examining the Inequalities." Women, Gender, and Families of Color, 3(2):144-164, Fall 2015. Available at http://www.jstor.org/stable/10.5406/womgenfamcol.3.2.0144?seq=#page_scan_tab_contents.

- 47 Even though people with disabilities were less likely to be employed than people without disabilities across all educational backgrounds, among people with disabilities, employment rates increase from 9 percent to 26.2 percent as individual educational attainment increases. Data are for the civilian noninstitutional population age 25 or older. “Persons with a Disability: Labor Force Characteristics Summary.” Bureau of Labor Statistics, U.S. Department of Labor, 21 June 2017. Available at <https://www.bls.gov/news.release/disabl.nr0.htm>.
- 48 Labor outcomes for individuals with disabilities are for those age 16 and above. “Persons with a Disability: Labor Force Characteristics Summary.” Bureau of Labor Statistics, U.S. Department of Labor, 21 June 2017. Available at <https://www.bls.gov/news.release/disabl.nr0.htm>.
- 49 Authors’ calculations using the American Community Survey five-year sample (2011-2015).
- 50 Ibid.
- 51 Authors’ calculations using the American Community Survey (ACS) five-year sample (2011-2015). Our unemployment calculations may yield higher numbers than the Bureau of Labor Statistics (BLS) official unemployment numbers due to rounding errors and because the BLS bases their rates on the Current Population Survey (CPS), rather than the ACS, which we use. The ACS may have higher unemployment numbers than the CPS by 25-30 percent.
- 52 2015 “National Employment & Disability Survey: Report of Main Findings.” Kessler Foundation, June 2015. Available at https://kesslerfoundation.org/sites/default/files/filepicker/5/KFSurvey15_Results-secured.pdf.
- 53 “Charge Statistics (Charges Filed with EEOC), FY 1997 Through FY 2016.” U.S. Equal Opportunity Commission, accessed 30 July 2017. Available at <https://www.eeoc.gov/eeoc/statistics/enforcement/charges.cfm>.
- 54 2015 National Employment & Disability Survey: Report of Main Findings.” Kessler Foundation, June 2015. Available at https://kesslerfoundation.org/sites/default/files/filepicker/5/KFSurvey15_Results-secured.pdf.
- 55 For authors’ calculations, an individual is defined as a full-time worker if they participate in the labor force and usually worked at least 35 hours a week for at least 48 weeks in 2015; an individual is characterized as a part-time worker if they usually worked at least one but less than thirty-five hours per week or for less than 48 weeks in 2015. Authors’ calculations using the American Community Survey five-year sample (2011-2015) and “Persons with a Disability: Labor Force Characteristics Summary.” Bureau of Labor Statistics, U.S. Department of Labor, 21 June 2017. Available at <https://www.bls.gov/news.release/disabl.nr0.htm>.
- 56 Authors’ calculations using the American Community Survey five-year sample (2011-2015).
- 57 Ibid.
- 58 Ibid.
- 59 She, Peiyun and Gina A. Livermore. “Long-Term Poverty and Disability Among Working-Age Adults.” *Journal of Disability Policy Studies*, 19(4)2009. Available at <http://journals.sagepub.com/doi/abs/10.1177/1044207308314954>.
- 60 Authors’ calculations using the American Community Survey five-year sample (2011-2015).
- 61 “Caregiving in the U.S.” AARP Public Policy Institute and National Alliance for Caregiving, June 2015. Available at <http://www.aarp.org/content/dam/aarp/ppi/2015/caregiving-in-the-united-states-2015-report-revised.pdf>.
- 62 Anderson, Lynda, et al. “2010 FINDS National Survey: Family and Individual Needs for Disability Supports.” *The Arc*, May 2011. Available at <http://www.thearc.org/document.doc?id=3673>.
- 63 Authors’ calculations using the American Community Survey five-year sample (2011-2015).
- 64 Though a significant amount of unpaid caregiving support does occur for people in both institutional and noninstitutional group quarters, as well as for individuals who do not live in the same household as the caregiver, we are looking at households from a shared finances perspective, and the Census data do not identify if a caregiving relationship is present or not in a household or across households and group quarters. For an example of unpaid caregiving in group quarters, see pp. 11, Figure 4 from Hunt, Gail Gibson, et al. “Caregiving in the U.S. 2015—Executive Summary.” AARP Public Policy Institute and National Alliance for Caregiving, June 2015. Available at http://www.caregiving.org/wp-content/uploads/2015/05/2015_CaregivingintheUS_Executive-Summary-June-4_WEB.pdf. Original data analysis in this report uses households rather than families because the American Community Survey definition of households is more inclusive, as defined by the Census Bureau. A household “includes all the people who occupy a housing unit ... A housing unit is a house, an apartment, a mobile home, a group of rooms, or a single room that is occupied (or if vacant, is intended for occupancy) as separate living quarters. Separate living quarters are those in which the occupants live separately from any other people in the building and which have direct access from the outside of the building or through a common hall. The occupants may be a single family, one person living alone, two or more families living together, or any other group of related or unrelated people who share living arrangements.” A family “consists of a householder and one or more other people living in the same household who are related to the householder by birth, marriage, or adoption. All people in a household who are related to the householder are regarded as members of his or her family.” For more information, see “American Community Survey and Puerto Rico Community Survey 2015 Subject Definitions.” U.S. Census Bureau, retrieved July 2017. Available at https://www2.census.gov/programs-surveys/acs/tech_docs/subject_definitions/2015_ACSSubjectDefinitions.pdf.
- 65 Authors’ calculations using the American Community Survey five-year sample (2011-2015).
- 66 Ibid.
- 67 Ibid.
- 68 Net worth includes equity in cars, businesses, and real estate. “Table 1. Median Value of Assets for Households, by Type of Asset Owned and Selected Characteristics: 2013.” U.S. Census Bureau, 2013. Available at <https://www.census.gov/data/tables/2013/demo/wealth/wealth-asset-ownership.html>.
- 69 “Table 1. Median Value of Assets for Households, by Type of Asset Owned and Selected Characteristics: 2013.” U.S. Census Bureau, 2013. Available at <https://www.census.gov/data/tables/2013/demo/wealth/wealth-asset-ownership.html>.
- 70 Ibid.
- 71 Omang, Joanne and Ellen Bravo. “In Their Own Words: Working People and the Need for Policies that Provide Economic Security.” The Leadership Conference Education Fund, May 2017. Available at <http://www.civilrights.org/press/2017/Economic-Security-Report.html>.
- 72 For more extensive discussion on various types of leave, see “What’s the Difference? Paid Sick Leave, FMLA, and Paid Family and Medical Leave.” U.S. Department of Labor, September 2016. Available at <https://www.dol.gov/sites/default/files/PaidLeaveFinalRuleComparison.pdf>.
- 73 Loss of access to employer-sponsored health, retirement, and other benefits can also be a problem. Glynn, Sarah Jane and Danielle Corley. “The Cost of Work-Family Policy Inaction: Quantifying the Costs Families Currently Face as a Result of Lacking U.S. Work-Family Policies.” Center for American Progress, 22 September 2016. Available at <https://www.americanprogress.org/issues/women/reports/2016/09/22/143877/the-cost-of-inaction/>.
- 74 Wenger, Jeffrey. “The Continuing Problems with Part-Time Jobs.” Economic Policy Institute, 31 March 2001. Available at http://www.epi.org/publication/issuebriefs_ib155/.

- 75 Vallas, Rebecca and Shawn Fremstad. "A Fair Shot for Workers with Disabilities." Center for American Progress, 28 January 2015. Available at <https://www.americanprogress.org/issues/poverty/reports/2015/01/28/105520/a-fair-shot-for-workers-with-disabilities/>.
- 76 "2015 American Community Survey, Table B18140." U.S. Census Bureau, 2015. Available at http://factfinder.census.gov/bkmk/table/1.0/en/ACS/15_YR/B18140.
- 77 Study is based on male household heads. Meyer, Bruce D. and Wallace K.C. Mok. "Disability, Earnings, Income and Consumption." National Bureau of Economic Research, March 2013. Available at <http://www.nber.org/papers/w18869.pdf>.
- 78 Survey was of adults aged 18 and older. Conroy, Nicole E., et al. "Financial Capability of Adults with Disabilities: Findings from the FINRA Investor Education Foundation 2012 National Financial Capability Study." Syracuse University and National Disability Institute, 22 July 2014. Available at https://www.realeconomicimpact.org/data/files/reports/ndi_financial_capability_report_july_2014.pdf.
- 79 This is due to "lower family income, higher disability-related expenses, and the challenges of providing needed assistance and care to disabled family members." Carlson, Steven, Brynne Keith-Jennings, and Raheem Chaudhry. "SNAP Provides Needed Food Assistance to Millions of People with Disabilities." Center on Budget and Policy Priorities, June 2017. Available at <http://www.cbpp.org/research/food-assistance/snap-provides-needed-food-assistance-to-millions-of-people-with>.
- 80 Conroy, Nicole E., et al. "Financial Capability of Adults with Disabilities: Findings from the FINRA Investor Education Foundation 2012 National Financial Capability Study." Syracuse University and National Disability Institute, 22 July 2014. Available at https://www.realeconomicimpact.org/data/files/reports/ndi_financial_capability_report_july_2014.pdf.
- 81 National Survey of Children with Special Health Care Needs. Data query from the Child and Adolescent Health Measurement Initiative, Data Resource Center for Child and Adolescent Health., NS-CSHCN 2009/10, retrieved 6 August 2017. Available at <http://childhealthdata.org/browse/survey/results?q=1750&r=1>.
- 82 Ibid.
- 83 Ibid.
- 84 Vallas, Rebecca and Shawn Fremstad. "A Fair Shot for Workers with Disabilities." Center for American Progress, 28 January 2015. Available at <https://www.americanprogress.org/issues/poverty/reports/2015/01/28/105520/a-fair-shot-for-workers-with-disabilities/>.
- 85 Isaacs, Julia, et al. "Paid Family Leave in the United States." Urban Institute, May 2017. Available at http://www.urban.org/sites/default/files/publication/90201/paid_family_leave.pdf.
- 86 Omang, Joanne and Ellen Bravo. "In Their Own Words: Working People and the Need for Policies that Provide Economic Security." The Leadership Conference Education Fund, May 2017. Available at <http://www.civilrights.org/press/2017/Economic-Security-Report.html>.
- 87 Houser, Linda and Thomas P. Vartanian. "Pay Matters: The Positive Economic Impacts of Paid Family Leave for Families, Businesses and the Public." Center for Women and Work, Rutgers, The State University of New Jersey, January 2012. Available at <http://www.nationalpartnership.org/research-library/work-family/other/pay-matters.pdf>.
- 88 Alex Klerman, Jacob, Kelly Daley, and Alyssa Pozniak. "Family and Medical Leave in 2012: Technical Report." Abt Associates, 2012. Available at <http://www.dol.gov/asp/evaluation/fmla/FMLA-2012-Technical-Report.pdf>.
- 89 "Table 32. Leave Benefits: Access, Civilian Workers, March 2016." U.S. Bureau of Labor Statistics, March 2016. Available at <https://www.bls.gov/ncs/ebs/benefits/2016/ownership/civilian/table32a.pdf>.
- 90 "2015 National Employment & Disability Survey: Report of Main Findings." Kessler Foundation, June 2015. Available at https://kesslerfoundation.org/sites/default/files/filepicker/5/KFSurvey15_Results-secured.pdf.
- 91 Workplace flexibility includes not only scheduling but also duration and location of work and tasks performed. See for example, Matos, Kenneth. "2014 National Study of Employers: Including the Talents of Employees with Disabilities." Families and Work Institute, Society for Human Resource Management, 2014. Available at <http://www.familiesandwork.org/downloads/nse-14-disabilities.pdf>. See also "Advancing Workplace Flexibility Policy and Practices: Synthesis Report." U.S. Department of Labor, Office of Disability Employment Policy and Women's Bureau, 30 September 2011. Available at <https://www.dol.gov/odep/pdf/WBForum.pdf>.
- 92 The survey did not ask respondents directly about their disability status or leave taken for a disability. Page 71 in Klerman, Jacob Alex, Kelly Daley, and Alyssa Pozniak. "Family and Medical Leave in 2012: Technical Report." Abt Associates, 2012. Available at <http://www.dol.gov/asp/evaluation/fmla/FMLA-2012-Technical-Report.pdf>.
- 93 "Social Determinants of Health." Healthy People 2020, Office of Disease Prevention and Health Promotion, U.S. Department of Health & Human Services, accessed 08 August 2017. Available at <https://www.healthypeople.gov/2020/topics-objectives/topic/social-determinants-of-health>.
- 94 Goodman, Nanette. "The Impact of Employment on the Health Status and Health Care Costs of Working-Age People with Disabilities." The National Center on Leadership for the Employment and Economic Advancement of People with Disabilities (LEAD Center), November 2015. Available at http://www.leadcenter.org/system/files/resource/downloadable_version/impact_of_employment_health_status_health_care_costs_0.pdf.
- 95 Sommers, Benjamin D., et al. "Health Insurance Coverage and Health — What the Recent Evidence Tells Us." *The New England Journal of Medicine*, DOI: 10.1056/NEJMsb1706645, 21 June 2017. Available at <http://www.nejm.org/doi/full/10.1056/NEJMsb1706645#t=article>.
- 96 Ben-Ishai, Liz, Zoe Ziliak Michel, and Alex Wang. "Paid Leave Necessary for an Ounce of Prevention Paid Leave and Access to Preventive Care." Center for Law and Social Policy, June 2017. Available at <http://www.clasp.org/resources-and-publications/publication-1/PreventiveHealthPaidLeave.pdf>.
- 97 Fox, Susannah, Maeve Duggan and Kristen Purcell. "Family Caregivers are Wired for Health." Pew Research Center, 20 June 2013. Available at <http://www.pewinternet.org/2013/06/20/family-caregivers-are-wired-for-health/>.
- 98 Each year, "working families in the United States lose out on at least \$28.9 billion in lost wages because they lack access to affordable child care and paid family and medical leave. This hidden cost includes \$8.3 billion in lost wages due to a lack of child care and \$20.6 billion in lost wages due to a lack of access to paid family and medical leave." Glynn, Sarah Jane and Danielle Corley. "The Cost of Work-Family Policy Inaction: Quantifying the Costs Families Currently Face as a Result of Lacking U.S. Work-Family Policies." Center for American Progress, 22 September 2016. Available at <https://www.americanprogress.org/issues/women/reports/2016/09/22/143877/the-cost-of-inaction/>.
- 99 "Caregivers of adults are defined as those who provide unpaid care, as described in the following question: At any time in the last 12 months, has anyone in your household provided unpaid care to a relative or friend 18 years or older to help them take care of themselves? This may include helping with personal needs or household chores. It might be managing a person's finances, arranging for outside services, or visiting regularly to see how they are doing. This adult need not live with you." Hunt, Gail Gibson, et al. "Caregiving in the U.S. 2015." National Alliance for Caregiving (NAC) and AARP Public Policy Institute, June 2015. Available at http://www.caregiving.org/wp-content/uploads/2015/05/2015_CaregivingintheUS_Final-Report-June-4_WEB.pdf.
- 100 Parker, Kim. "About One-In-Four U.S. Workers Have Taken Leave to Care For a Seriously Ill Family Member." Pew Research Center, 30 March 2017. Available at <http://www.pewresearch.org/fact-tank/2017/03/30/about-one-in-four-u-s-workers-have-taken-leave-to-care-for-a-seriously-ill-family-member/>.

- 101 Much of this care is for aging parents, as “at least 80 percent of older adults have at least one chronic condition.” “Fact Sheet: Older Adults and Family Caregivers Need Paid Family and Medical Leave.” National Partnership for Women and Families, November 2015. Available at <http://www.nationalpartnership.org/research-library/work-family/paid-leave/older-adults-and-caregivers.pdf>.
- 102 Dastur, Nina, et al. “Building the Caring Economy: Workforce Investments to Expand Access to Affordable, High-Quality and Long-Term Care.” Georgetown Center on Poverty and Inequality, May 2017. Available at http://www.georgetownpoverty.org/wp-content/uploads/2017/05/Building-the-caring-economy_hi-res.pdf.
- 103 Ibid.
- 104 Ng, Terence, et al. “Medicaid Home and Community-Based Services Programs: 2013 Data Update.” Kaiser Family Foundation, October 2016. Available at <http://files.kff.org/attachment/Report-Medicaid-Home-and-Community-Based-Services-Programs-2013-Data-Update>.
- 105 Demand for these services may be greater still, insofar as the existence of lengthy waitlists discourage some people with disabilities from applying for and joining the waitlist. Ng, Terence, et al. “Medicaid Home and Community-Based Services Programs: 2013 Data Update.” Kaiser Family Foundation, October 2016. Available at <http://files.kff.org/attachment/Report-Medicaid-Home-and-Community-Based-Services-Programs-2013-Data-Update>.
- 106 Yang, Y. Tony and Gilbert Gimm. “Caring for Elder Parents: A Comparative Evaluation of Family Leave Laws.” *The Journal of Law, Medicine & Ethics*, 41(2):501–513, June 2013. Available at <http://journals.sagepub.com/doi/pdf/10.1111/jlme.12058>.
- 107 Romig, Kathleen. “SSI: A Lifeline for Children with Disabilities.” Center on Budget and Policy Priorities, 11 May 2017. Available at <https://www.cbpp.org/research/social-security/ssi-a-lifeline-for-children-with-disabilities>.
- 108 National Survey of Children with Special Health Care Needs. Data query from the Child and Adolescent Health Measurement Initiative, Data Resource Center for Child and Adolescent Health, NS-CSHCN 2009/10, retrieved 30 July 2017. Available at <http://childhealthdata.org/browse/survey/results?q=1634&r=1>.
- 109 Gomez Mandic, Carmen, et al. “Impact of Caring for Children With Medical Complexity on Parents’ Employment and Time.” *Community, Work & Family*, 20(4), 29 June 2016. Available at <http://www.tandfonline.com/doi/full/10.1080/13668803.2016.1202195>.
- 110 Earle, Alison and Jody Heymann. “The Cost of Caregiving: Wage Loss Among Caregivers of Elderly and Disabled Adults and Children with Special Needs.” *Community, Work & Family*, 15(3):357-375, August 2012. Available at <http://www.tandfonline.com/doi/abs/10.1080/13668803.2012.674408>.
- 111 He, Wan and Luke J. Larsen. “Older Americans With a Disability: 2008-2012.” U.S. Census Bureau, December 2014. Available at <https://www.census.gov/content/dam/Census/library/publications/2014/acs/acs-29.pdf>.
- 112 48 percent of fathers and 59 percent of mothers of children with special health care needs (CSHCN) in the National Survey of Children’s Health reported that their physical health, mental health, or both was not excellent or very good, compared to 37 percent of fathers and 41 percent of mothers of non-CSHCN.. Data query from the Child and Adolescent Health Measurement Initiative, Data Resource Center for Child and Adolescent Health, NSCH 2011/12, retrieved 30 July 2017. Available at <http://childhealthdata.org/browse/survey/results?q=2269&r=1&g=471> and <http://childhealthdata.org/browse/survey/results?q=2272&r=1&g=471>.
- 113 “Higher-hour caregivers are more likely to say their health is fair or poor (22% vs. 14% of those providing 0 to 20 hours of care), and less likely to describe their health as excellent or very good (40% vs. 52% of lower-hour caregivers).” Hunt, Gail Gibson, et al. “Caregiving in the U.S. 2015.” National Alliance for Caregiving (NAC) and AARP Public Policy Institute, pp. 50, June 2015. Available at http://www.caregiving.org/wp-content/uploads/2015/05/2015_CaregivingintheUS_Final-Report-June-4_WEB.pdf.
- 114 Hunt, Gail Gibson, et al. “Caregiving in the U.S. 2015.” National Alliance for Caregiving (NAC) and AARP Public Policy Institute, June 2015. Available at http://www.caregiving.org/wp-content/uploads/2015/05/2015_CaregivingintheUS_Final-Report-June-4_WEB.pdf.
- 115 Hess, Cynthia et al. “The Status of Women in the States: 2015.” Institute for Women’s Policy Research, 20 May 2015. Available at <https://iwpr.org/wp-content/uploads/wpallimport/files/iwpr-export/publications/PDF%20of%20final%20Work%20&%20Family%20chapter%209-4-2015.pdf>.
- 116 Earle, Alison and Jody Heymann. “Protecting the Health of Employees Caring for Family Members with Special Health Care Needs.” *Social Science & Medicine*, 73:68-78, 27 May 2011. Available at <http://www.sciencedirect.com/science/article/pii/S0277953611002917?via=ihub>.
- 117 Hess, Cynthia et al. “The Status of Women in the States: 2015.” Institute for Women’s Policy Research, 20 May 2015. Available at <https://iwpr.org/wpcontent/uploads/wpallimport/files/iwpr-export/publications/PDF%20of%20final%20Work%20&%20Family%20chapter%209-4-2015.pdf>; “Paid Leave is Crucial For Women and Families.” National Women’s Law Center, December 2013. Available at https://nwlc.org/wp-content/uploads/2015/08/family_act_fact_sheet.pdf; Pedulla, David S. and Sarah Thébaud. “Can We Finish the Revolution? Gender, Work-Family Ideals, and Institutional Constraint.” *American Sociological Review*, 80(1):116–139, January 2015. Available at <http://journals.sagepub.com/doi/abs/10.1177/0003122414564008>.
- 118 “Women in the Labor Force: a Databook.” BLS Reports, Bureau of Labor Statistics, U.S. Department of Labor, April 2017. Available at: <https://www.bls.gov/pub/reports/womens-databook/2016/home.htm>.
- 119 Galinsky, Ellen et. al. “Times are Changing: Gender and Generation at Work and at Home.” Families and Work Institute, August 2011. Available at http://familiesandwork.org/site/research/reports/Times_Are_Changing.pdf
- 120 Parker, Kim and Wendy Wang. “Modern Parenthood: Roles of Moms and Dads Converge as They Balance Work and Family.” Pew Research Social & Demographic Trends, March 2013. Available at <http://www.pewsocialtrends.org/2013/03/14/modern-parenthood-roles-of-moms-and-dads-converge-as-they-balance-work-and-family/>.
- 121 Frye, Jocelyn. “The Missing Conversation about Work and Family: Unique Challenges Facing Women of Color.” Center for American Progress, 3 October 2016. Available at <https://www.americanprogress.org/issues/women/reports/2016/10/03/145208/the-missing-conversation-about-work-and-family/>.
- 122 Schuster, Mark A., et al. “Perceived Effects of Leave from Work and the Role of Paid Leave Among Parents of Children with Special Health Care Needs.” *American Journal of Public Health*, 99(4):698–705, April 2009. Available at <https://www.ncbi.nlm.nih.gov/pmc/articles/PMC2661484/>.
- 123 “Table 32. Leave Benefits: Access, Civilian Workers, March 2016.” U.S. Bureau of Labor Statistics, March 2016. Available at <https://www.bls.gov/ncs/eps/benefits/2016/ownership/civilian/table32a.pdf>.
- 124 Vallas, Rebecca and Shawn Fremstad. “A Fair Shot for Workers with Disabilities.” Center for American Progress, 28 January 2015. Available at <https://www.americanprogress.org/issues/poverty/reports/2015/01/28/105520/a-fair-shot-for-workers-with-disabilities/>.
- 125 “Fact Sheet # 77B: Protection for Individuals under the FMLA.” Wage and Hour Division, U.S. Department of Labor, December 2011. Available at <https://www.dol.gov/whd/regs/compliance/whdfs77b.htm>.
- 126 More information about covered employers can be found through the Department of Labor’s Wage and Hour Division. “Fact Sheet #28: The Family and Medical Leave Act.” Wage and Hour Division, U.S. Department of Labor, revised 2012. Available at <https://www.dol.gov/whd/regs/compliance/whdfs28.pdf>.

- 127 “Under some circumstances, employees may take FMLA leave on an intermittent or reduced schedule basis. That means an employee may take leave in separate blocks of time or by reducing the time he or she works each day or week for a single qualifying reason.” While this can give employees a way to take time off for personal care and/or caregiving needs, in practice this ability may be somewhat limited, as workers are still subject to paid leave request determinations by their employers. “Fact Sheet #28: The Family and Medical Leave Act.” Wage and Hour Division, U.S. Department of Labor, 2012. Available at <https://www.dol.gov/whd/regs/compliance/whdfs28.pdf>.
- 128 “Inequities in Eligibility for FMLA leave.” The Heller School For Social Policy and Management, 2011. Available at <http://www.diversitydatakids.org/files/Policy/FMLA/Capacity/Inequities%20in%20FMLA%20eligibility.pdf>.
- 129 Donovan, Sarah A. “Paid Family Leave in the United States.” Congressional Research Service, R44835, 24 May 2017. Available at <https://fas.org/sgp/crs/misc/R44835.pdf>.
- 130 “Fact Sheet #28: The Family and Medical Leave Act.” Wage and Hour Division, U.S. Department of Labor, 2012. Available at <https://www.dol.gov/whd/regs/compliance/whdfs28.pdf>.
- 131 “Wage and Hour Division (WHD): Military Family Leave Provision.” U.S. Department of Labor. Available at: <https://www.dol.gov/whd/fmla/MilitaryFLProvisions.htm>.
- 132 The ADA requires that workers with disabilities be provided the same access to leave benefits provided by the employer to all employees, and additional leave from work can be provided as an accommodation for the disability. “Work-Leave, the ADA, and the FMLA.” ADA National Network, 2014. Available at <https://adata.org/factsheet/work-leave>.
- 133 “Employer-Provided Leave and the Americans with Disabilities Act.” U.S. Equal Employment Opportunity Commission, 9 May 2016. Available at <https://www.eeoc.gov/eeoc/publications/ada-leave.cfm>.
- 134 Donovan, Sarah A. “Paid Family Leave in the United States.” Congressional Research Service, R44835, 24 May 2017. Available at <https://fas.org/sgp/crs/misc/R44835.pdf>.
- 135 Federal guidelines stipulate that “the 12 months of employment do not have to be consecutive.” Workers may count “any time previously worked for the same employer (including seasonal work)” towards the 12-month requirement. “Fact Sheet #28: The Family and Medical Leave Act.” Wage and Hour Division, U.S. Department of Labor, revised 2012. Available at <https://www.dol.gov/whd/regs/compliance/whdfs28.pdf>.
- 136 Alex Klerman, Jacob, Kelly Daley, and Alyssa Pozniak. “Family and Medical Leave in 2012: Technical Report.” Abt Associates, 2012. Available at <http://www.dol.gov/asp/evaluation/fmla/FMLA-2012-Technical-Report.pdf>.
- 137 If they have worked less than 1,250 hours for a single employer in the previous 12 months. This applies to workers with multiple part-time positions as well. “Fact Sheet #28: The Family and Medical Leave Act.” Wage and Hour Division, U.S. Department of Labor, revised 2012. Available at <https://www.dol.gov/whd/regs/compliance/whdfs28.pdf>.
- 138 “Inequities in Eligibility for FMLA leave.” The Heller School For Social Policy and Management, Brandeis University, 2011. Available at <http://www.diversitydatakids.org/files/Policy/FMLA/Capacity/Inequities%20in%20FMLA%20eligibility.pdf>.
- 139 Ibid.
- 140 “PF2.1: Key characteristics of parental leave systems.” OECD Family Database, updated 15 March 2017. Available at http://www.oecd.org/els/soc/PF2_1_Parental_leave_systems.pdf.
- 141 Livingston, Gretchen. “Among 41 nations, U.S. is the outlier when it comes to paid parental leave.” Pew Research Center, 26 September 2016. Available at <http://www.pewresearch.org/fact-tank/2016/09/26/u-s-lacks-mandated-paid-parental-leave/>.
- 142 “PF2.5. Trends in parental leave policies since 1970.” OECD Family Database, updated 16 March 2017. Available at http://www.oecd.org/els/family/PF2_5_Trends_in_leave_entitlements_around_childbirth.pdf.
- 143 Addati, Laura, et al. “Maternity and Paternity at Work: Law and Practice Across the World.” International Labour Organization, 13 May 2014. Available at http://ilo.org/wcmsp5/groups/public/---dgreports/---dcomm/---publ/documents/publication/wcms_242615.pdf.
- 144 “PF2.1: Key Characteristics of Parental Leave Systems.” OECD Family Database, 2017. Available at https://www.oecd.org/els/soc/PF2_1_Parental_leave_systems.pdf.
- 145 Donovan, Sarah A. “Paid Family Leave in the United States.” Congressional Research Service, R44835, 24 May 2017. Available at <https://fas.org/sgp/crs/misc/R44835.pdf>.
- 146 “These three states, along with New York, Hawaii, and the Commonwealth of Puerto Rico, also provide paid personal medical leave through temporary disability insurance (TDI). The TDI programs provide income to workers with an illness or injury that keeps them out of work for a period of time, including medical leave for pregnancy and childbirth. Employees, and sometimes employers, pay small premiums to finance paid family leave and TDI programs.” “The Cost of Doing Nothing: The Price We All Pay Without Paid Leave Policies to Support America’s 21st Century Working Families.” U.S. Department of Labor, 4 September 2016. Available at <https://www.dol.gov/featured/paidleave/cost-of-doing-nothing-report.pdf>.
- 147 “Notice to Employees.” Employment Development Department: State of California, November 2008. Available at <https://www.shrm.org/resourcesandtools/tools-and-samples/toolkits/documents/de1858.pdf>.
- 148 “State Paid Family Leave Insurance Laws.” National Partnership for Women & Families, July 2017. Available at <http://www.nationalpartnership.org/research-library/work-family/paid-leave/state-paid-family-leave-laws.pdf>.
- 149 La Corte, Rachel. “Inslee Signs Bill Guaranteeing Paid Family Leave in Washington.” The Seattle Times, 6 July 2017. Available at <http://www.seattletimes.com/seattle-news/politics/inslee-signs-plan-for-paid-family-leave/>. See also “Details of the New Family and Medical Leave Law.” Washington Work and Family Coalition, 5 July 2017. Available at <http://waworkandfamily.org/2017/07/05/details-of-the-new-family-and-medical-leave-law/>.
- 150 Temporary Disability Insurance is an insurance pool funded by employee and/or employee contributions to provide wage replacement to those unable to work due to non-work related injuries and illnesses. “Paid Leave in Four States: Lessons for Montana Policymakers and Advocates.” Montana Budget & Policy Center, December 2015. Available at <https://www.dol.gov/wb/media/Paid%20Family%20Medical%20Leave%20in%20Four%20States%20FINAL.pdf>.
- 151 “Paid Family/Parental Leave Policies for Municipal Employees (Not Exhaustive): February 2017-April 2017.” National Partnership for Women and Families, 2017. Available at <http://www.nationalpartnership.org/research-library/work-family/psd/paid-family-leave-policies-for-municipal-employees.pdf>.
- 152 The state of Washington also passed a law guaranteeing paid family leave in 2007 that was ultimately never implemented (it would have taken effect in October 2009). “Paid Sick Days – State, District and County Statutes.” National Partnership for Women and Families, November 2016. Available at <http://www.nationalpartnership.org/research-library/work-family/psd/paid-sick-days-statutes.pdf>.
- 153 “Table 32. Leave Benefits: Access, Civilian Workers, March 2016.” U.S. Bureau of Labor Statistics, March 2016. Available at <https://www.bls.gov/ncs/ebs/benefits/2016/ownership/civilian/table32a.pdf>.
- 154 Loprest, Pamela and Karin Martinson. “Supporting Work for Low-Income People with Significant Challenges.” Urban Institute, 16 July 2008. Available at <https://www.opressrc.org/content/supporting-work-low-income-people-significant-challenges>.

- 155 Frothingham, Sunny. “Broader Paid Leave Would Provide Opportunity and Security for Millennial Caregivers.” Center for American Progress, December 2015. Available at <https://www.americanprogress.org/issues/economy/reports/2015/12/10/126840/broader-paid-leave-would-provide-opportunity-and-security-for-millennial-caregivers/>.
- 156 “Table 32. Leave Benefits: Access, Civilian Workers, March 2016.” U.S. Bureau of Labor Statistics, March 2016. Available at <https://www.bls.gov/ncs/ebs/benefits/2016/ownership/civilian/table32a.pdf>.
- 157 National Compensation Survey: Employee Benefits in the United States, March 2016 (Tables 16 and 32).” U.S. Department of Labor, Bureau of Labor Statistics, September 2016. Available at <https://www.bls.gov/ncs/ebs/benefits/2016/ebb10059.pdf>.
- 158 “National Compensation Survey: Employee Benefits in the United States, March 2016 (Tables 16 and 32).” Bureau of Labor Statistics, U.S. Department of Labor, September 2016. Available at <https://www.bls.gov/ncs/ebs/benefits/2016/ebb10059.pdf>.
- 159 Ibid.
- 160 88 percent of all civilian workers have unpaid leave. “Table 32. Leave Benefits: Access, Civilian Workers, March 2016.” U.S. of Labor Statistics, March 2016. Available at <https://www.bls.gov/ncs/ebs/benefits/2016/ownership/civilian/table32a.pdf>.
- 161 “The Cost of Doing Nothing: The Price We All Pay Without Paid Leave Policies to Support America’s 21st Century Working Families.” U.S. Department of Labor, 4 September 2016. Available at <https://www.dol.gov/featured/paidleave/cost-of-doing-nothing-report.pdf>.
- 162 In terms of number of employees.
- 163 Donovan, Sarah A. “Paid Family Leave in the United States.” Congressional Research Service, R44835, 24 May 2017. Available at <https://fas.org/sgp/crs/misc/R44835.pdf>.
- 164 Desilver, Drew. “Access to Paid Family Leave Varies Widely across Employers, Industries.” Pew Research Center, 23 March 2017. Available at <http://www.pewresearch.org/fact-tank/2017/03/23/access-to-paid-family-leave-varies-widely-across-employers-industries/>.
- 165 Barriers to employment as defined by questions in the 2012 May CPS supplement. “Persons with a Disability: Barriers to Employment, Types of Assistance, and Other Labor-Related Issues — May 2012.” U.S. Bureau of Labor Statistics, U.S. Department of Labor, 24 April 2013. Available at https://www.bls.gov/news.release/archives/dissup_04242013.pdf.
- 166 “Table 32. Leave Benefits: Access, Civilian Workers, March 2016.” U.S. Bureau of Labor Statistics, U.S. Department of Labor, March 2016. Available at <https://www.bls.gov/ncs/ebs/benefits/2016/ownership/civilian/table32a.pdf>.
- 167 “Status of Women in the United States: Work & Family.” Institute for Women’s Policy Research. Available at <https://statusofwomensdata.org/explore-the-data/work-family/read-the-full-section/>.
- 168 Vallas, Rebecca and Shawn Fremstad. “A Fair Shot for Workers with Disabilities.” Center for American Progress, 28 January 2015. Available at <https://www.americanprogress.org/issues/poverty/reports/2015/01/28/105520/a-fair-shot-for-workers-with-disabilities/>.
- 169 “Part-Time Workers Are Paid Less, Have Less Access to Benefits—and Two-Thirds Are Women.” National Women’s Law Center, 1 September 2015. Available at <https://nwlc.org/resources/part-time-workers-are-paid-less-have-less-access-benefits%E2%80%94and-two-thirds-are-women/>.
- 170 In addition, nearly a quarter (22 percent) of all employed adults are “either working multiple jobs, doing informal work for pay in addition to their main job, or both.” “Report on the Economic Well-Being of U.S. Households in 2015.” Board of Governors of the Federal Reserve System, May 2016. Available at <https://www.federalreserve.gov/2015-report-economic-well-being-us-households-201605.pdf>.
- 171 “The situation is particularly acute for low-wage workers, as well as the growing numbers of independent contractors, freelancers, and others who lack any stable connection to an employer.” Appelbaum, Eileen and Ruth Milkman. “Leaves that Pay: Employer and Worker Experiences with Paid Family Leave in California.” Center for Economic and Policy Research, et al., 2011. Available at <https://www.shrm.org/resourcesandtools/hr-topics/benefits/documents/paid-family-leave-1-2011.pdf>.
- 172 “Data on Poverty & Income.” National Women’s Law Center, September 2016. Available at <https://nwlc.org/issue/data-on-poverty-income/>.
- 173 Omang, Joanne and Ellen Bravo. “In Their Own Words: Working People and the Need for Policies that Provide Economic Security.” The Leadership Conference Education Fund, May 2017. Available at <http://civilrightsdocs.info/pdf/reports/economic-security-2017-web.pdf>.
- 174 “Not surprisingly, the likelihood of reporting paid leave was higher for women aged 25 and over, for white women, for married women, and for women with a college education. Only a third of working mothers without post-secondary education reported paid leave time.” Houser, Linda and Thomas P. Vartanian. “Pay Matters: The Positive Economic Impacts of Paid Family Leave for Families, Businesses and the Public.” Center for Women and Work, Rutgers, The State University of New Jersey, January 2012. Available at <http://www.nationalpartnership.org/research-library/work-family/other/pay-matters.pdf>.
- 175 Compared to “nearly 40 percent of all women workers.” Hess, Cynthia, et al. “The Status of Women in the States: 2015.” Institute for Women’s Policy Research, 20 May 2015. Available at <https://iwpr.org/wp-content/uploads/wpallimport/files/iwpr-export/publications/PDF%20of%20final%20Work%20&%20Family%20chapter%209-4-2015.pdf>.
- 176 Fremstad, Shawn and Melissa Boteach. “Valuing All Our Families: Progressive Policies that Strengthen Family Commitments and Reduce Family Disparities.” Center for American Progress, 12 January 2015. Available at <https://www.americanprogress.org/issues/poverty/reports/2015/01/12/104149/valuing-all-our-families/>.
- 177 As of 2014. Bowman, Moira, et al. “Making Paid Leave Work for Every Family.” Center for American Progress, et al., December 2016. Available at <http://forwardtogether.org/assets/files/lgbtpaidleave-report.pdf>.
- 178 FMLA “defines ‘family’ narrowly, limiting the term to include a child who is under 18 years of age or has a disability, a spouse, or a parent.” Bowman, Moira, et al. “Making Paid Leave Work for Every Family.” Center for American Progress, et al., December 2016. Available at <http://forwardtogether.org/assets/files/lgbtpaidleave-report.pdf>.
- 179 “Fact Sheet #28B: FMLA leave for birth, placement, bonding, or to care for a child with a serious health condition on the basis of an “in loco parentis” relationship.” U.S. Department of Labor, Wage and Hour Division, July 2015. Available at <https://www.dol.gov/whd/regs/compliance/whdfs28B.pdf>.
- 180 “Fact Sheet #28C: The definition of “parent” as it applies to an individual who stood in loco parentis to an employee for FMLA “eldercare” protections.” U.S. Department of Labor, Wage and Hour Division, July 2015. Available at <https://www.dol.gov/whd/regs/compliance/whdfs28C.pdf>.
- 181 Bowman, Moira, et al. “Making Paid Leave Work for Every Family.” Center for American Progress, et al., December 2016. Available at <http://forwardtogether.org/assets/files/lgbtpaidleave-report.pdf>.
- 182 Forthcoming analysis by Gallagher Robbins, Katherine, and Laura Durso. Center for American Progress, 2017.
- 183 “Siblings and the Family and Medical Leave Act.” Sibling Leadership Network, 7 August 2015. Available at <http://siblingleadership.org/wp-content/uploads/2015/08/FMLA-Fact-Sheet.pdf>.
- 184 Donovan, Sarah A. “Paid Family Leave in the United States.” Congressional Research Service, R44835, 24 May 2017. Available at <https://fas.org/sgp/crs/misc/R44835.pdf>.

- 185 At least one state, Minnesota, requires employers to provide leave for school conferences, but such leave is not mandated for paid. "2016 Minnesota Statutes." The Revisor of Statutes, State of Minnesota. Available at <https://www.revisor.mn.gov/statutes/?id=181.9412>.
- 186 Rossin-Slater, Maya. "Maternity and Family Leave Policy." NBER Working Paper No. 23069, January 2017. Available at http://www.nber.org/papers/w23069?utm_campaign=ntw&utm_medium=email&utm_source=ntw.
- 187 Ibid.
- 188 "The Cost of Doing Nothing: The Price We All Pay Without Paid Leave Policies to Support America's 21st Century Working Families." U.S. Department of Labor, 4 September 2015. Available at <https://www.dol.gov/featured/paidleave/cost-of-doing-nothing-report.pdf>.
- 189 Workers in California again help illustrate why current and proposed policies must be designed and/or updated to better accommodate the experience of having a disability. Of those surveyed, "nearly a third ... who were aware of PFL but did not apply for it when they needed a family leave ... reported that they felt the level of wage replacement was too low." Appelbaum, Eileen and Ruth Milkman. "Leaves that Pay: Employer and Worker Experiences with Paid Family Leave in California." Center for Economic and Policy Research, et al., 2011. Available at <https://www.shrm.org/resourcesandtools/hr-topics/benefits/documents/paid-family-leave-1-2011.pdf>.
- 190 Beebe, Joyce. "Paid Family Leave: Balancing Acts." Issue Brief, Rice University's Baker Institute for Public Policy, 11 May 2017. Available at https://www.bakerinstitute.org/media/files/files/ca0b08a0/BI-Brief-051117-CPF_PaidFamilyLeave.pdf.
- 191 Appelbaum, Eileen and Ruth Milkman. "Leaves that Pay: Employer and Worker Experiences with Paid Family Leave in California." Center for Economic and Policy Research, et al., 2011. Available at <https://www.shrm.org/resourcesandtools/hr-topics/benefits/documents/paid-family-leave-1-2011.pdf>.
- 192 Mathur, Aparna. "The Problem With Paid Family Leave: Access Is Not The Same As Take-Up." *Forbes*, 4 March 2016. Available at <https://www.forbes.com/sites/aparnamathur/2016/03/04/the-problem-with-paid-family-leave-in-the-u-s-access-is-not-the-same-as-take-up/#3052892f30e1>.
- 193 Silverstein, Robert. "Emerging Disability Policy Framework: A Guidepost for Analyzing Public Policy." *Iowa Law Review*, 85(5):1691-1806, August 2000. Available at http://www.ncwd-youth.info/assets/framework/silverstein_framework.pdf.
- 194 Dresser, Laura. "Valuing Care by Valuing Care Workers: The Big Cost of a Worthy Standard and Some Steps toward It." The Roosevelt Institute, 7 October 2015. Available at <http://rooseveltinstitute.org/wp-content/uploads/2015/10/Valuing-Care-by-Valuing-Care-Workers.pdf>.
- 195 "Key Findings: 2016 Election Eve/Election Night Survey." In a 2016 election night survey, Democrats (95 percent) and most independents (84 percent) and Republicans (70 percent) say it is important for the next president and Congress to consider paid leave laws. National Partnership for Women & Families, November 2016. Available at <http://www.nationalpartnership.org/research-library/work-family/key-findings-2016-election-eve-election-night-survey.pdf>.
- 196 "Paid Family and Medical Leave: An Issue Whose Time Has Come." AEI-Brookings Working Group on Paid Family Leave, May 2017. Available at https://www.brookings.edu/wp-content/uploads/2017/06/es_20170606_paidfamilyleave.pdf.
- 197 Maternity, paternity and adoption leave policies are undergoing a shift as companies and governments make adjustments to address changing demographics and societal norms, according to a recent report from Mercer that looked at practices in 50 countries." Gurchiek, Kathy. "Mercer: Shifting Attitudes Reflected in Family Leave Policies." Society for Human Resource Management, 6 September 2016. Available at <https://www.shrm.org/resourcesandtools/hr-topics/global-hr/pages/mercer-shifting-attitudes-reflected-in-family-leave-policies.aspx>.
- 198 "National Paid Family and Medical Leave: A Proposal for Small Business Success." The Main Street Alliance. 2017. Available at https://d3n8a8pro7vnm.cloudfront.net/mainstreetalliance/pages/10/attachments/original/1486411533/PFML_2017_Report.pdf?1486411533.
- 199 "Small Business Support Paid Family Leave Programs." Small Business Majority and Center for American Progress. 30 March 2017. Available at <http://new.smallbusinessmajority.org/our-research/workforce/small-businesses-support-paid-family-leave-programs>.
- 200 "Study of Employers Finds Parental and Caregiving Leave Benefits Have Remained the Same Since 2012." Society for Human Resource Management (SHRM), 8 March 2017. Available at <https://www.shrm.org/about-shrm/press-room/press-releases/pages/2016-national-study-of-employers.aspx>.
- 201 Peck, Emily. "Why More Americans Are Getting Paid Sick Days." *Huffington Post*, July 2017. Available at: http://www.huffingtonpost.com/entry/paid-sick-days_us_59763e82e4b0a8a40e813e53.
- 202 Cole, Patricia. "Twenty-One Years Later: The Movement for Paid Family Leave." *Zero to Three*, 18 February 2014. Available at <https://www.zerotothree.org/resources/563-twenty-one-years-later-the-movement-for-paid-family-leave>.
- 203 Gault, Barbara, et al. "Paid Parental Leave in the United States: What the Data Tell Us About Access, Usage, and Economic and Health Benefits." Institute for Women's Policy Research, March 2014. Available at <https://iwpr.org/wp-content/uploads/wpallimport/files/iwpr-export/publications/B334-Paid%20Parental%20Leave%20in%20the%20United%20States.pdf>. See also Ruhm, Christopher J. "The Economic Consequences of Parental Leave Mandates: Lessons from Europe." *The Quarterly Journal of Economics*, 113 (1), 1998. Available at http://libres.uncg.edu/ir/uncg/f/C_Ruhm_Economic_1998.pdf. See also Ruhm, Christopher J. and Jacqueline L. Teague. "Parental Leave Policies in Europe and North America." National Bureau of Economic Research, Working Paper No. 5065, 1995. Available at <http://www.nber.org/papers/w5065>.
- 204 "The Economics of Paid and Unpaid Leave." The Council of Economic Advisers, June 2014. Available at https://obamawhitehouse.archives.gov/sites/default/files/docs/leave_report_final.pdf.



CENTER ON POVERTY and INEQUALITY
GEORGETOWN LAW

ECONOMIC SECURITY and
OPPORTUNITY INITIATIVE

